

(Unofficial Translation)

Guidelines for applying to the “Project of Decommissioning and Contaminated Water Management (Research and Development of Processing and Disposal of Solid Waste)”

Date: March 4, 2019

Management Office for the Project of Decommissioning
and Contaminated Water Management

The Management Office for the Project of Decommissioning and Contaminated Water Management (hereinafter referred to as “PMO”) solicits entities to implement subsidies for the “Subsidized Project of Decommissioning and Contaminated Water Management (Research and Development of Processing and Disposal of Solid Waste)”. Details of the project are stipulated in these Guidelines; furthermore, the procedures for implementation of the project are stipulated in the “Grant Policy for Subsidy for the Project of Decommissioning and Contaminated Water Management”.

1. Purpose of Project

This project will be conducting projects that aim to support development of technologies contributing to decommissioning and contaminated water management of Fukushima Daiichi Nuclear Power Station (hereinafter referred to as “Fukushima Daiichi NPS”) of Tokyo Electric Power Company Holdings, Incorporated (hereinafter referred to as “TEPCO”) based upon the “Mid-and-Long-Term Roadmap towards the Decommissioning of Fukushima Daiichi Nuclear Power Station of Tokyo Electric Power Company Holdings, Incorporated” (hereinafter referred to as “Mid-and-Long-Term Roadmap”) and “The Decommissioning Research and Development Plan for FY 2019” (The 63rd meeting of Secretariat of the Team for Decommissioning and Contaminated Water Countermeasures / PMO), so that the decommissioning and contaminated water management of Fukushima Daiichi NPS can be implemented smoothly, and the level of science and technology in Japan can be enhanced. Please note that this project is implemented in conjunction with the engineering and the project administration activities performed by TEPCO in Fukushima Daiichi NPS, and the results obtained from this project will be utilized for the engineering activities conducted by TEPCO.

2. Contents of Project

The Mid- and Long-Term Roadmap specifies that solid waste¹ at Fukushima Daiichi NPS should

¹ “rubble, etc.” generated after the accident (although some of them may be reused on the site and may not be considered as waste or radioactive waste), secondary waste from water treatment, and solid radioactive waste that has been stored in the Fukushima Daiichi NPS site before the accident.

be stored and managed safely and reasonably according to its characteristics and the system for reasonably selecting the method of processing for stabilization and immobilization (preceding processing^{2*}) should be established. With this as a goal, the method of safe storage and management of solid waste shall be investigated and assessed, the concept of processing and disposal of solid waste shall be established, technology for the evaluation, etc. of contamination for segregation shall be developed, and the streaming of grasping properties and sampling technology shall be developed.

A Comprehensive Subsidized Project Operating Entity must implement all implementation items from (1) through (4). A Partial Subsidized Project Operating Entity must implement item (2) ① i). Both entities shall proceed with the project by keeping cooperating with each other through the intermediary of PMO.

Each entity of this project shall cooperate with other projects such as “Development of Technologies for Retrieving Fuel Debris and Internal Structures” and “Development of Technologies for Containing, Transportation and Storage of Fuel Debris”, and shall compile, renew and share information on a regular basis.

(1) Storage and management

① Investigation and evaluation of storage and management method

i) Investigation and evaluation of information on waste and Investigation of storage method for high-dose waste

In accordance with the state of investigation of fuel debris retrieval method, the latest information on the kind and quantity, etc. of high-dose waste shall be investigated and evaluated, and on the basis of such information, the possible handling process for high-dose waste up to the storage shall be investigated. More than one scenario for handling of representative high-dose waste shall be envisaged, effects on throughput and storage capacity, etc. be evaluated and their viability shall be verified.

ii) Investigation of requirements of containers and facilities for storage

First, high-dose waste shall be put in an inner container. Next, the inner container shall be put in a container for transport and then shall be transported to a building for storage. Since inner containers require shields according to dose levels, reasonable containers able to match shields of more than one thickness shall be investigated. Since the use of filter vent systems for containers for storage is envisaged as a protective measure against gas generation, the requirements of such containers shall be investigated. Since containers for transport requires a system of protection

² stabilization and immobilization of solid waste in consideration of future disposal before the technical requirements of disposal are established. To minimize the possibility that the processing may not meet the technical requirements of disposal, for each specification of solid waste on which preceding processing was applied, the safety against some disposal methods is evaluated, and based on the results, the processing methods should be selected.

against gas generation during transport, the requirement of such protective measure shall be investigated.

As regards protective measures against the corrosion of containers required at the time of containing high-dose waste and protective measures against gas generation in which sealing is envisaged at the time of disposal, space requirements, etc. for the installment of required facilities for drying treatment etc. of the containers shall be investigated. As regards items of measurement required for storage at storage buildings, measurement methods, requirements of facilities to measure, place of measurement and timing of measurement, etc. shall be investigated and proposed considering the priority and the adaptability to the on-site situation.

②Development of technology for contamination evaluation to segregate solid waste

In order to develop systems to measure α contamination-causing substances attached to surface of concrete buildings and equipment, etc., detectors, display functions and pan-tilt mechanisms, etc. for the on-site adaptation shall be designed and manufactured and tests for their systematization shall be conducted. Then, *in situ* mock-up tests shall be conducted for α -contaminated equipment and devices and their performance shall be evaluated.

(2) Establishment of the processing and disposal concept, and Development of safety assessment methodology

①Development of selection method for precursory processing methodology

With regard to high-and low-temperature treatment technology, data necessary for extracting stabilization and immobilization technique likely to be applied to actual processing shall be obtained and evaluated in order to contribute to the development of selection method for preceding processing methodology.

i) High-temperature processing technology

By using engineering-scale test equipment and devices, etc., data on evaluation items required for the extraction of processing technology (immobilization processing facilities (specification of immobilization containers and necessary facilities), operability, performance of solidified substances, adequateness for the disposal of waste, economic potential, compliance with domestic regulations, etc.) shall be acquired. Investigation shall be also conducted on effects of the compositional variation of wastes, soundness of temperature-affected containers at the time of disposal, economy of containers, rates of transfer to off-gas such as Cs, etc., leaching rate of radionuclide from solidified substances, performance of solidified substances when processed at a relatively low temperature, feeding system and off-gas processing system, specification of waste and safety assessment at the time of waste disposal.

ii) Low-temperature treatment technology

Since the properties of solid wastes are varied, methodologies to judge the possibility of

solidifying wastes by using low-temperature treatment technology shall be investigated. Moreover, investigation and test shall be carried out on the degeneration of solidified substances by heating, etc. and the effects of these treatments shall be evaluated.

Concerning the heat generation of solidified substances due to Cs, etc., the relationship between inventory and temperature shall be evaluated. And, the inventory, which enables solidified substances to keep their soundness shall be investigated. Thermodynamic data sufficiency and equilibrium calculation applicability shall be investigated, the effect on long-term degeneration shall be summarized and compiled and thus, the degeneration behavior of solidified substances shall be evaluated.

iii) Investigation of applicability evaluation approach of processing technology

Since each processing technology is to evaluate the scope of applicable solid wastes, the effects of the composition and chemical form of solid waste or the composition of solidified bodies on the performance of solidified bodies shall be investigated. In order to evaluate the specification of waste of each processing technology, the concept of solidification processing facility shall be investigated. And data on the efficiency of economic performance such as facility configuration and processing efficiency rate, content of maintenance, the kind of expendable supplies and frequency of replacement and the kind and volume of secondary waste materials shall be obtained.

Since in high-temperature processing technology the volatilization of Cs is a major agenda to be addressed, the volatilization and inhibitory mechanism of Cs shall be investigated, and the characteristics of Cs volatilization depending on processing methods or operation conditions shall be evaluated.

② Proposal of disposal method and Development of safety assessment method

More than one disposal method matching the categorization of solid wastes shall be investigated considering national & foreign results of various researches on disposal concepts and safety assessment methods and information on the properties of solid wastes. And, items to be addressed shall be closely examined and required information shall be collected, summarized and compiled towards developing safety assessment methods for each disposal method.

And with a reference of behavior related to the degradation of barrier performance due to substances affecting the safety of disposal, investigation shall be conducted so that the safety assessment methods mentioned above shall enable these effects to be reflected in appraisal work.

Furthermore, for each disposal method which is investigated, the image of waste for each processing technology applicable according to solid waste characteristics, shall be further clarified.

(3) Enhancement of the efficiency of the process of grasping the properties of wastes

Since solid wastes are large in volume and diverse in nuclide composition and radioactivity concentration due to the effects of accidents, it is necessary to proceed efficiently with the process of

grasping the properties of wastes towards the establishment of reasonable processing and disposal method depending on the waste characteristics. For this very reason, the following matters shall be conducted.

① Enhancement of the efficiency of the process of grasping the properties of wastes

i) Developing the methodology for grasping properties by combining analytical data and evaluation data based on migration model

Considering analytical data both obtained or published on rubble, contaminated water, secondary waste from water treatment, soil, logged tree, etc., as well as on the migration behavior of contaminated nuclide inferred from the result of analysis, understanding of the contamination mechanism as a migration model shall be further pursued and accordingly a methodology to evaluate the representativeness of analytical data shall be developed.

Statistical inventory estimation methods shall be developed by examining and summarizing analytical data relating to measurement error, variation and correlation. And their applicability shall be assessed by checking correlation with analytical data, etc.

Within the limits of contributing to the development of properties grasping methodologies, analytical data on rubbles, etc. piled up within reactor buildings and in their vicinity, secondary wastes from water treatment and contaminated water, etc. stagnating within reactor buildings, etc., shall be obtained, evaluated and managed.

ii) Simplification and promptness of analytical methods, etc.

For the purpose of enhancing the efficiency of and rationalizing properties grasping, technologies shall be developed for simple and speedy analytical methods for nuclides to be analyzed through the rationalization & automatization of preprocessing, etc. and the preparation of manuals shall be investigated.

② Development of sampling technologies

In the light of analytical needs for research & development on the processing and disposal of solid wastes, sampling technologies for high dose samples shall be developed. Relating to the sampling of cesium adsorbents, essential technologies such as the drilling & stoppage, etc. of adsorption towers required for designing the mock-up device of sampling devices, shall be tested and evaluated.

(4) Integration of the research and development results

Investigation of the waste stream: Reflect the outcomes of the investigations described in above (1) to (3) to the waste stream (a series of waste management and handling methods from the generation of waste through the stages of storage, processing and disposal), and carry out a comprehensive evaluation of the progress, integrity of the outcomes and the unsolved issues. The evaluation must outline the issues in a manner which will facilitate future research and development.

3. Operation of research and development

(1) Human resource development for medium and long-term

Efforts need to be made to strengthen the relationship with universities, research organizations, etc. through implementing joint research, etc. from the viewpoint of human resource development in the middle and long-term.

(2) Gathering domestic and overseas wisdom

Projects must be conducted by utilizing domestic and overseas wisdom. In particular, they must consider mobilizing necessary technologies and knowledge both from Japan and overseas broadly. In case of development of machines and equipment, establishment of common basis of the machines and equipment (utilization of widely used goods and goods which have already been developed, etc.) must be taken into account as much as possible in order to promote reasonable development. Furthermore, in the development of evaluation method, it is important to be validated and reviewed objectively by third parties such as academic societies, etc. Hence, such validation and review must distinctively be placed in the development plan or be set as a milestone.

In implementing the project by introducing domestic and foreign technologies and knowledge, if necessary, the external organization shall be chosen through a public bid such as a general competitive bidding in a timely manner; and in order to ensure transparency and fulfill accountability, the information on the public bid must be published on the website and the link to the information must appear the PMO's webpage, with the intention to disseminate it widely.

(3) Clarification of tests conditions and specifications for development

Consideration of requirement level necessary for implementing decommissioning activities must be done before commencement of elements tests and equipment design; furthermore, evaluation of to what extent existing technologies can be utilized must be done as quantitatively as possible. Based upon these, information on the target of the degree of the tests and equipment development compared to the requirement level must be shared with concerned parties, and the test conditions and design specifications must be established.

(4) Definition of criterion for judgment of degree of objective achievement

Comprehensible criteria which can be a measure for the judgment of objective achievement of the project must be defined using numerical values, etc. (Refer to Table 1); and they must be validated whether or not the objective will have been achieved at the completion of the project.

Table 1 Definition of Technology Readiness Level (TRL)

Level	Definition corresponding to this project	Phase
7	At the stage of completion of practical utilization	Practical use
6	At the stage of being demonstrated in the field	Field demonstration
5	At the stage of production of prototype with the scale of practical use, and demonstration in a simulated environment such as in a factory, etc.	Demonstration of simulation
4	At the stage of implementation of function tests at the level of trial production as a process of development and engineering	Research for practical use
3	At the stage of proceeding with development or engineering using application or combination of existing experiences. Or at the stage of proceeding with development or engineering based upon elementary data in the area with lack of existing experiences.	Application research
2	At the stage of proceeding with development or engineering in the area nearly without applicable existing experiences, and with setting up the specifications.	Application research
1	At the stage of clarifying elementary contents regarding development or engineering.	Elementary research

(5) Cooperation with decommissioning activities and associated research and development projects

Clarify how the results obtained could contribute to the decommissioning activities and associated research and development projects, and positive cooperation and collaboration with the associated research & development projects shall be conducted. For this purpose, it is necessary to share harmonized input /output information among the associated research and development projects. In order to realize this information sharing, coordination among the entities involved must be done using Form 4 at the commencement of the project and other suitable timings; and it must also be regularly shared with and confirmed by PMO and other concerned entities. Furthermore, the information on implementation of the project (such as progress situation, acquired data, challenges, etc.) must be shared with and offered to PMO and the concerned entities in a timely and appropriate manner. Also, Non-Disclosure Agreement must be concluded among the Subsidized Project Operating Entities, the associated research & development project entities and PMO, if necessary. PMO will conduct the necessary coordination.

(6) Research management

The project must be proceeded with bearing in mind that the achievement goals of the project (such as the contents of outputs, target schedule, etc.) were established so as to achieve high-rank goals of this project.

Furthermore, it is necessary to create a flexible implementation organization that can reflect the following matters to the project, because information of the reactor interior is still limited, and a great deal of uncertainties remain in respect of the preconditions for technological

development.

[1] Discussions about the Mid-and-Long-Term Roadmap, discussions at meetings of the Secretariat of the Team for Decommissioning and Contaminated Water Countermeasures, and opinions expressed by the Agency for Natural Resources and Energy, and so forth.

[2] Discussions concerning the “Technical Strategic Plan for Decommissioning of the Fukushima Daiichi Nuclear Power Station of Tokyo Electric Power Company Holdings, Inc.”, discussions at meetings held by and instructions and advice given by Nuclear Damage Compensation and Decommissioning Facilitation Corporation, and so forth.

[3] Knowledge obtained through engineering, project management, studies, analyses, field activities, etc. conducted by TEPCO, and opinions expressed by TEPCO, and so forth.

(7) Work management for reflection of on-site situation of and in consideration of the adaptability to Fukushima Daiichi NPS, etc.

It is important to quickly grasp the site situation etc. and the progress of the engineering activities conducted by TEPCO towards the achievement of goals of the project. Furthermore, it is important to cope with problems, if any, as quickly as possible, by confirming whether the preconditions of the project are satisfied, at the early stage of the project, from the viewpoint of the adaptability to the site situation. For that purpose, it is required to implement the project by establishing an organization which achieves close cooperation and collaboration with TEPCO, and taking opinions of TEPCO into consideration.

Furthermore, if you plan to implement some activities such as on-site investigation or demonstration tests at Fukushima Daiichi NPS, etc., you have to negotiate sufficiently with TEPCO beforehand; and constitute a management scheme in accordance with the negotiation and based upon the understanding obtained through the negotiation which you have to observe and take heed of, so that adequate safety measures can be implemented.

(8) Progress report

The entity is required to report implementation plan, progress situation, project results, etc. to PMO on request. Especially, the implementation situation must be reported at the end of every month by using the implementation schedule as described in Reference Document 2, etc., and after completion of the project, results report must be established and submitted.

Please be noticed that PMO is entitled to share the submitted information with the concerned organizations on the basis of “5. Implementing Scheme” with due considerations to the non-disclosure information stipulated by Act on Access to Information Held by Administrative Organs (Act No. 42 of May 14, 1999).

(9) Enhancement of outreach

Comprehensible explanation to the public regarding the project contents and results must be enhanced. The entity is also required to actively cooperate with the government and the concerned organizations for dissemination of information. Especially, it is necessary to make effort to quickly disclose to public about results of the project which can be disclosed to public

after the completion of the project.

(10) Preparation of other options

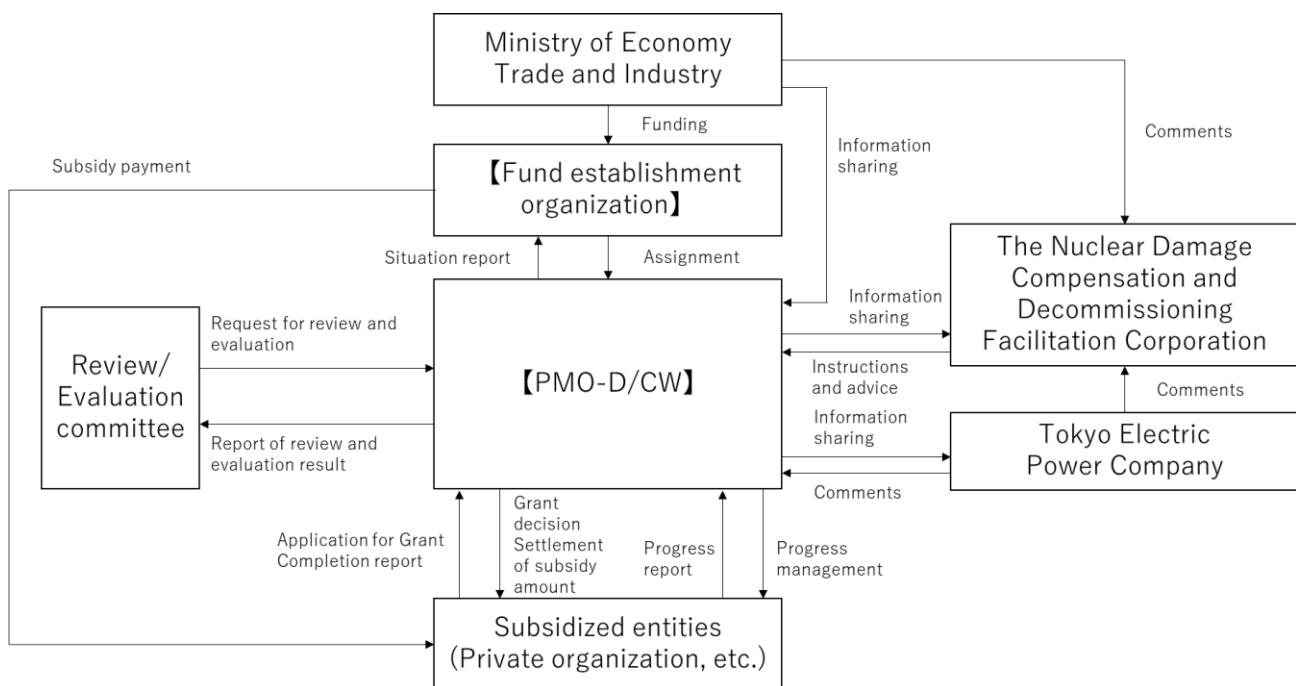
Alternative options must be prepared for the case that the project cannot be proceeded with as planned during the project term. If the alternative options are prepared or revised, the information must be notified to PMO.

4. Project Term

- From the day of grant decision to March 31, 2021

In “Outline of Subsidized Project (Form 2)”, please describe both “Implementation Plan” and “Plan of the income and expenditure” for each period; The period from the day of grant decision to March 31, 2020 and the period from April 1, 2020 to March 31, 2021 since the contents of the grant decision would be coordinated considering the National Budget, etc.

5. Implementing Scheme



6. Application Requirements

The private companies, etc. satisfying all of requirements (1) to (9) shown below are qualified to apply for the subsidies. Applications from consortia are also acceptable. In that case, a managing legal entity must be appointed out of each consortium and submit the project proposal. (Please note that no managing legal entity may commission the entire work to another legal entity.)

- (1) Possessing the organization for properly conducting the relevant subsidized project.
- (2) Having the capacity, knowledge and experience required for conducting the relevant subsidized project.
- (3) Having the management foundation required for smoothly conducting the relevant subsidized project and sufficient ability to control the funds and other resources.
- (4) Being able to follow the appropriate accounting procedures in accordance with the “Grant Policy for Subsidy for the Project of Decommissioning and Contaminated Water Management” and the “Subsidized Project Administration Manual (*)”. With regard to overseas entities, as a general rule, being able to prepare the evidenced documents in Japanese or English, and present them in Japanese territory on demand from the PMO.

(*) <http://en.dccc-program.jp/files/20150623man.pdf>

- (5) Not foreseen to be subject to Articles 70 and 71 of the Cabinet Order concerning the Budget, Auditing and Accounting.
- (6) Not fulfilling any of the conditions stipulated in the “Guidelines for the suspension of subsidies controlled by the Ministry of Economy, Trade and Industry and the suspension of designation

relating to the contracts". (January 29, 2003, No 1) First column, the second items in Attachment (7) The applicant must have a compliance system under a self-regulated structure which meets the "Standards for Exporters, etc. to Meet" provided for in Article 55-10 (1) of the Foreign Exchange and Foreign Trade Act. We will confirm this system using (Form 3) "Response to Security Export Controls" when selecting applicants, so please use this form to fill in the required items and submit the required documents.

[Reference] Standards for Exporters, etc. to Meet

Regulations to be observed by parties engaged in export or provision of technology in the course of trade (exporters).

Exporters that do not handle security-sensitive "specified important goods, etc." have a duty to 1) nominate a person responsible for checking goods, etc., and 2) provide guidance to managers and export workers on compliance. Exporters that do handle security-sensitive "specified important goods, etc." have a duty to 1) identify a representative as the responsible person, 2) set out an export control system, 3) set out a procedure for checking regulated/non-regulated goods, 4) set out a procedure for confirming the usage and consumer, and confirm these in accordance with that procedure, and 5) confirm that the goods to be shipped coincide with the confirmed non-regulated goods at the time of shipping.

- (8) Admitting that the results obtained through this project can be utilized by TEPCO, etc. to leverage them for Decommissioning and Contaminated Water Countermeasures if they request to do so under the condition that each party is in agreement. Not preventing the utilization by behaviors such as not allowing to use the technology intentionally, asking for unreasonable compensation, etc. in spite of receiving the request.
- (9) In order to make sure of the above-mentioned item, preventing a situation where the results from this project are not be able to be utilized for Decommissioning and Contaminated Water Management Countermeasures at the Fukushima Daiichi NPS by ceding the above-mentioned condition in (8) to the successor if the applicant transfers the result to a third party and loses their own right to utilize it accordingly. In the case of a conflict which makes the applicant unable to make sure of the items in (8), the concerned parties must solve it by their own responsibility.

7. Requirement Conditions for Grant Decision

- (1) Number of proposals to be adopted : One (Comprehensive proposal), More than one (Partial proposal)
- (2) Subsidy rate and maximum amount of subsidy
- The subsidy is fixed in JPY.
- Maximum amount: 2,700,000,000 JPY (Comprehensive proposal)
- Maximum amount: 1,100,000,000 JPY (Partial proposal)
- Subsidies are paid in JPY. The contents of the project, amount of the subsidy, etc. will ultimately be settled only after coordination with PMO.

(3) Time of Payment

In principle, the subsidies are paid after the project is completed.

*Please note that cases where the payment (i.e. the payment by estimate) before the completion of the project is permitted are limited.

(4) Confirmation of the amount of payment

The amount to be paid is decided based on the result report which is submitted by the operating entities after the project is complete as well as the results of the survey at the verification site and/or the office.

The amount to be paid will be the total of the expenses to be covered by the subsidies, which do not exceed the granted subsidy amount. For this reason, the account ledgers, receipts and other documents are necessary for supporting all the expenses. All the expenses will be strictly inspected and evaluated. Thus, the expenses not meeting the conditions mentioned above may be rejected.

(5) Grasp the implementation organization at the time of submitting the Project Result Report

Since the Ministry find necessary to confirm the implementation organization of the project, when submitting the Project Result Report after the project is completed, as expenses are covered by the subsidy in the case of outsourcing or commissioning contract, the Subsidized Entity must attach the implementation organization document (*) describing the name of the contractors (only for transactions of 1 million yen or more including tax), their relationship with the Subsidized Entity, their address, the contract amount and the contract content.

(*) This document is to be confirmed at the inspection.

Although "outsourcing expenses" and "commission expenses" are subject to subsidy, "travel expenses", "meeting expenses", "gratuities", "equipment expenses (including rent and hire fees)", "assistant personnel costs (including temporary staffing)" are not eligible.

In the case of subcontracting or recommissioning from the contractors (in the case of subcontracting etc., limited to transactions of 1 million yen or more including tax), please describe their information in the implementation organization document same as above (There is no need to describe the contract amount for sub-subcontracting or re-recommissioning).

【Implementation Organization Document Description Template】

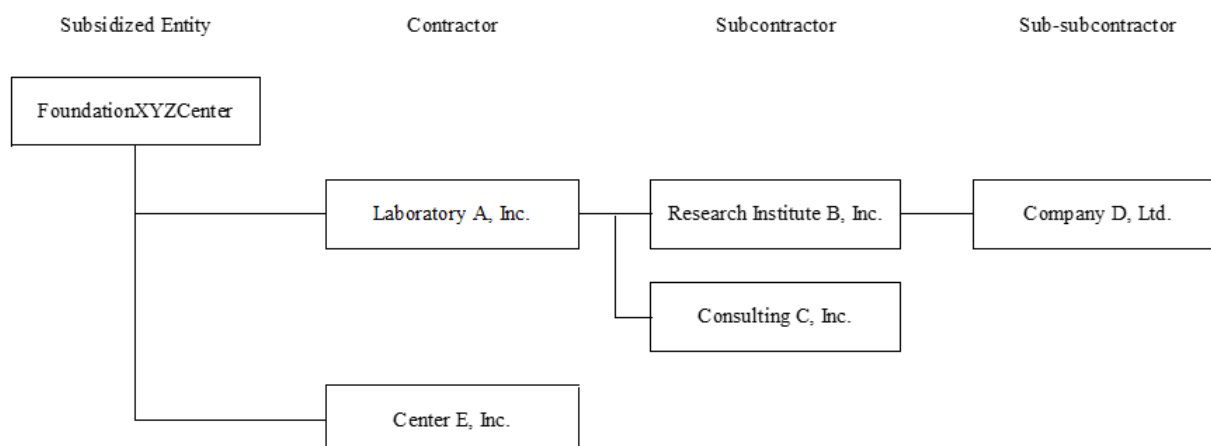
In principle, the implementation organization should be presented in the Organization Table as shown below and include the implementation organization chart. There is no prescribed form if the implementation organization, the name of the contractors, their relationship with the Subsidized Entity, their address, the contract amount, and the contract content are clearly stated on the document.

Implementation Organization Table (limited to contract of work/service agreement of 1 million yen or more including tax)

Name of Outsourcing/Commissioning Company	Relationship with Subsized Entity	Address	Contract amount (with tax)	Contract content
Laboratory A, Inc.	Contractor	XXX-ku, TokyoXXX	*Using Arabic numerals, show amounts in yen value	*Fill in as detail as possible
Research Institute B, Inc.	Subcontractor (Subcontractor of Laboratory A, Inc.)	Refer to the sample above	Refer to the sample above	Refer to the sample above
Consulting C, Inc.	Subcontractor (Subcontractor of Laboratory A, Inc.)	Refer to the sample above	Refer to the sample above	Refer to the sample above
Company D, Ltd.	Sub-subcontractor (Subcontractor of Research Institute B, Inc.)	Refer to the sample above	No need to fill in (*)	Refer to the sample above
Center E, Inc.	Contractor	XXX-ku, TokyoXXX	*Using Arabic numerals, show amounts in yen value	*Fill in as detail as possible

(*) Company D, Ltd. is a sub sub subcontractor from the standpoint of the Subsized Company so there is no need to write the contract amount.

Implementation Organization Chart (limited to contract of work/service agreement of 1 million yen or more including tax)



8. Application Procedure

(1) Application Period

Commencement: Monday, March 4, 2019

Deadline: 10:00 AM on Wednesday, March 20, 2019

We will not accept any proposals after this deadline.

(2) Information Session

Monday, March 11, 2019 11:30 – 11:50

Venue: Conference Room at Mitsubishi Research Institute, Inc.

Map: http://www.mri.co.jp/english/profile/locations/map_headoffice.html

If you would like to attend the session, please inform the contact point written in “13. Contact”

by 12:00 AM on Friday, March 8 via email. The session will be held in Japanese. If you need a translator, please make arrangements on your own (You are responsible for the expense). If you need an information session in English, please consult with PMO by the above deadline via email. Please note that the capacity of the venue is limited.

When making contact, please title your e-mail "Register for attendance to the information session for 'Project of Decommissioning and Contaminated Water Management'" and include the "corporate or organization name," "name of the attendee," "department," "phone number," "fax number," "e-mail address," and "subsidized project name to apply" in the main text.

To applicants from the EEA member states:

Private information will be used only in the working related to explanation meetings and will not be distributed to any other organizations. When you have provided us with such information, we assume that we have received it with your clear understanding that you submit it in agreement to the above-said condition.

(3) Application form and other documents to be submitted

[1] Please submit the following documents as one file. Please title your file "Application for the subsidy program 'Project of Decommissioning and Contaminated Water Management (Research and Development of Processing and Disposal of Solid Waste)'.

- Application form (Form 1)
- Outline of Subsidized Project (Form 2)
- Certificate of Conformance (Form 3)
- Input/ Output information (Form 4)
- Response to Security Export Controls (Form 5)
- Personal Data Processing Consent Form (Form 6)
- Other documents
 - Outline of Corporation or Organization (such as a brochure, etc.)
 - The financial results, and statement of revenues and expenses (of the last year)
 - The articles of association or the act of endowment
 - Other supporting documents

* You must submit 1 copy of the application documents using A4 paper. You can describe them in Japanese or English. If you bring the application documents with you or submit them by mail, one CD-ROM must be submitted along with the hard copies. Furthermore, submission to attach 1 copy via email to the email address for application is permitted. As a general rule, the file format must be Ichitaro, MS-Word, MS-PowerPoint or MS-Excel. If you have unavoidable reasons not to be able to use these formats, please contact us.

* If your proposal is adopted, there is a possibility that Input/Output information will be released to other entities.

[2] All the application documents submitted will not be used for any purposes other than the evaluation in the course of the selection process. Please note that the application documents submitted will not be returned. We take the utmost care to preserve confidentiality. However, if your proposal is adopted, the information except the non-disclosure information (i.e. the personal information, the information detrimental to the legitimate interests of legal entities) may be disclosed under the “Act on Access to Information held by Administrative Organs” (Act No. 42 enacted on May 14, 1999).

To applicants from the EEA member states:

Private information included in application documents will be used only in the evaluation. Therefore, PMO will not distribute such private information to any other organizations besides METI, Fund establishment organization, NDF, and Review/Evaluation committee. When you apply for the subsidy program, you must clearly understand the above-said condition and submit Form 6.

[3] The costs spent for issuing the application documents and other documents will not be included in the expenses. Also, the costs spent for issuing those documents will not be compensated for regardless of whether the proposal is adopted or not.

[4] The matters described in your proposal are considered to be the fundamental policies which should be observed during the project. Consequently, please be sure to describe only the matters which are feasible within the budget. Also, please note that even if your proposal is adopted, it may be rejected later on if you make a significant change to it at your discretion.

[5] Appropriateness of the costs breakdown must be shown using supplemental explanation documents.

(4) Place of submission

The application documents must be delivered to the following address via hand-carry, mail or email, etc.

Toranomon Toyo Bldg. 8th Floor
4-2, Toranomom 1-chome, Minato-ku,
Tokyo 105-0001, JAPAN

Contact: Mr. Kondo, Mr. Nakamura

Email address for submission: hr-apply@mri.co.jp

* Please DO NOT send the application documents via fax. Incomplete documents will be rejected and not subject to evaluation. Therefore, please carefully read and follow the procedures for application to correctly fill out the documents.

* Any application documents submitted after the closing date will not be accepted. If you send the documents by postal mail, they may not be delivered by the designated time

on the closing date. Consequently, you are advised to mail them sufficiently ahead of the closing date.

9. Evaluation and Adoption

(1) Method of Evaluation

Applications will firstly be evaluated through paper screening, so that the applicants for the presentation to the review committee can be selected. This committee will be held some day from March 26, 2019 to March 29, 2019. Depending on the capacity of the venue, the number of the participants to the presentation may be restricted. Furthermore, hearings and on-site investigation may be conducted as required; and submission of additional documents may be requested.

(2) Evaluation Criteria

Applications are to be comprehensively evaluated based upon the following criteria. However, the applications which have been judged not to meet the criterion [3] and [5] shall be disqualified regardless of evaluation of the other criteria.

[1] Objective, contents, implementation method, and applicability to countermeasures for decommissioning (Including adaptability to the work site)

Whether or not the Project purpose corresponds to the project purpose described in the “Guidelines for applying” is to be evaluated.

Judgment is made as to whether the contents of the project conform to the project objective and are provided specifically taking into account the applicability to countermeasures for decommissioning (including adaptability to the work site).

Whether the implementation method of the project is consistent with the purpose and details of the project is to be evaluated.

[2] Project Implementation Schedule

Whether or not the project implementation plan (timeline) is appropriate to the purpose and details of the project, etc. is to be evaluated.

[3] Project Implementation Organization

Judgment is made as to whether the entity has the project implementation structure, expertise as an organization, expertise of those who are to be engaged in the project, and the track records of similar projects. We focus on whether a project implementation organization including the project leader is clearly identified, and whether it has the implementation ability and the coordination system to consider/judge the applicability to countermeasures for decommissioning (Including adaptability to the work site).

[4] Project Cost

Whether or not project costs are appropriately allocated to the project purpose and contents, etc. is to be evaluated.

[5] Financial Basis and Management System for Implementation of Project

Whether or not the applicant organization has a financial basis and a management system enabling them to implement the project is to be evaluated.

(3) Decision and Announcement of Results

PMO will release the adopted entities on our website, etc. The adopted entities will be notified of the result.

10. Grant Decision

The project shall be initiated after the adopted entity submits a grant application for the subsidy to PMO and PMO has sent a notice of grant decision in return.

It should be noted that there may be changes in the details, composition and scale of the project as well as its budget between the decision of adoption and grant, as a result of consultation with the PMO. Also, please be aware that the grant decision may not be notified if the adopting requirements are not met.

Although subsidized project operating entities may be provided with information required to implement the project after the decision of grant, they may be requested to observe the confidentiality depending on the nature of the information.

Information on the decision of grant of the subsidy (adopted date, the entity adopted (granted), date of grant decision, corporation number in Japan, value of grant, etc.) will be shown on the Corporation Information* in principle.

* The Corporation Information operated by Ministry of Economy, Trade and Industry is a system, with the start of the 'My Number' system considered, to link a corporation number in Japan to corporation information such as those regarding subsidy and prize-giving. Anybody can execute batch retrieval/browsing in the system. With this system, expansion of new businesses, reduced costs in information acquisition, and more efficient businesses are expected in business enterprises and public offices.

Web address: <http://hojin-info.go.jp>

11. Allocation of Expenses

(1) Classification of Expenses Covered by Subsidy

The expenses covered by the subsidy shall be those directly required for the implementation of the project and those required for compiling the project results. The specific items are listed below.

Items of Expense	Description
(1) Labor Costs	Expenses for personnel required to implement the subsidized project.

(2) Operating Costs	Expenses for raw materials, consumables, design/fabrication/processing, facility/equipment, goods purchase, research, outsourcing, travel, remunerations, rent/depreciation and other necessities.
---------------------	--

(2) Expenses not to be Included in Expenses Covered by Subsidy

- Office supply equipment (furniture such as desks, chairs and bookshelves, office machinery and so forth) with which the applicants should already be provided when considering the nature of the project.
- Expenses for handling accidents and disasters that occurred during the project. (However, cancellation fees incurred by reasons not attributable to subsidized project operating entities may be directly included as an expense. Please consult the person in charge on this matter.)
- Expenses unrelated to the project

(3) Exclusion of Consumption Tax from Expenses Covered by Subsidy

If general and local consumption taxes (hereinafter referred to as “consumption tax”) are included in the subsidy amount, the applicants shall be requested to submit a report after the settlement of tax amount, according to the granting guidelines.

This is so specified as to demand, at the time of filing an income tax return, that subsidized project operating entities should report and return the amount to which the subsidy has been applied, out of the amount of deduction for taxable purchase, so that the amount for which the subsidy has been allocated out of the amount of deduction for taxable purchase shall not be detained.

However, because the report mentioned above is based on an income tax return that will be filed after the settlement of the subsidy, occasional delinquency in reporting due to lapse of memory has been found. Also, in order to avoid the complicated office procedures that need to be followed by subsidized project operating entities, the consumption tax shall be handled as follows.

When determining the amount of subsidy applied for in the grant application, the consumption tax must be excluded from the expenses covered by the subsidy before calculating the subsidy amount and submitting the application.

However, to avoid hindrance to the implementation of the subsidized project, such subsidized project operating entities as those listed below shall be permitted to include the consumption tax in the expenses covered by the subsidy when calculating the amount of subsidy.

- [1] Subsidized project operating entities who are not classified as taxpayers under the Consumption Tax Act
- [2] Subsidized project operating entities who are tax-exempt business entities
- [3] Subsidized project operating entities who are business providers subject to simplified tax
- [4] National or local governments (limited to cases when project is conducted with a special account), or subsidized project operating entities who are corporations listed in the attached

Table 3.

- [5] Subsidized project operating entities who are using the general account of a national or local government
- [6] Subsidized project operating entities who are taxable business providers that choose a refund of consumption tax, following confirmation of consumption tax and purchase tax deductions, for instance due to a low amount of taxable sales

12. Miscellaneous

- (1) Any expenses incurred before the date when the decision on grant of the subsidy is made (including expenses for order placement) shall not be covered by the subsidy program.
- (2) In the event that the subsidized project operating entity desires to make a purchase or other contract related to material procurement or involving an occurrence of cost, it shall invite open competitive bidding, as a general rule, from the viewpoint of cost effectiveness. If the subsidized project operating entity desires to transfer part of the subsidized project to a third party or conduct the project in partnership with a third party, it shall in advance make a contract on the implementation and report this to PMO.
- (3) Once informed that the decision on grant of the subsidy is made, the subsidized project operating entity shall not change the subsidy budget distribution or the details of the subsidized project nor interrupt or terminate the project without prior approval from PMO.
- (4) The subsidized project operating entity shall promptly report the progress of the subsidized project and so on whenever required to do so by PMO.
- (5) After the subsidized project is completed (or the project termination is approved), the subsidized project operating entity shall submit a project result report to the management office.
- (6) The subsidized project operating entity shall keep accounts on any expenditures for the subsidized project with dedicated account books accompanied by all written evidences in a way that is clearly differentiated from the other accounting to ensure that all incomes and expenditures are meticulously accounted for. The entity shall maintain the account books at least five years after the fiscal year in which the date of completion (or the date of approval for termination) is included so that they can be accessible whenever requested by METI, fund establishment organization and PMO.
- (7) With respect to the assets acquired or the utility of which has increased through the subsidized project (hereinafter referred to as "the Acquired Assets, etc."), the subsidized project operating entity shall manage them with due care of a prudent manager even after the completion of the subsidized project, and strive to effectively make use of them in accordance with the purpose of the grant of the subsidy. All applicable Acquired Assets, etc. shall be properly controlled using an Acquired Asset Ledger during the asset disposal restriction period, which will be separately set forth.
- (8) If the subsidized project operating entity needs to dispose of (i.e., use, transfer, loan or offer as

collateral assets contrary to the purpose of the grant of the subsidy) any Acquired Asset having a unit price equal to or higher than 500 thousand yen (tax excluded) during the asset disposal restriction period separately set forth, they must obtain prior approval. In this case, the entity shall pay part of or the entire subsidy amount as a general rule. (The maximum payment does not exceed the subsidy amount for the appropriate asset to be disposed of).

(9) After the completion of the subsidized project, the Board of Audit may visit the premises of the subsidized project operating entity for inspection.

13. Contact

Toranomon Toyo Bldg. 8th Floor
4-2, Toranomom 1-chome, Minato-ku,
Tokyo 105-0001, JAPAN

Contact: Mr. Kondo, Mr. Nakamura

E-mail: hairo30@ml.mri.co.jp

* Contact us through e-mail. We regret that no inquiries will be accepted via telephone.

(Form 1)

No. *Leave blank.	
----------------------	--

Management Office for the Project of Decommissioning and Contaminated Water
Management

Application for the subsidies for the “Project of Research and Development of Processing and
Disposal of Solid Waste”

Applicant	Corporation number (*)	
	Company/Organization Name	
	Representative (Full Name and Title)	
	Address	
Contact	Contact Person (Full Name)	
	Section/Department	
	Title	
	Telephone (Extension, if any)	
	E-mail	

* If a corporation number in Japan has been given, fill in the 13-digit number.

If you are an individual and foreign company, etc., not having it, leave the field as it is.

(Exhibit)

1. Name of the Subsidized Project

2. Objective and contents of the Subsidized Project

**Describe your own understanding of the background of the project, the purpose of the project and its contents briefly.*

3. Scheduled commencement and completion dates of the Subsidized Project

(Scheduled commencement date):

(Scheduled completion date):

4. Entire costs needed for the project JPY

5. Costs subject to subsidy JPY

6. Subsidy amount to be applied for JPY

7. Allocation amount of the costs for the Subsidized Project, costs eligible for the subsidy and subsidy amount to be applied for

The contents are the same as (2) Expenditures, I. Summary table of “2. Plan of the income and expenditure of the Subsidized Project” of the Form 2, “Brief explanation of subsidized project”.

8. Bases for Calculation for the above amount

The contents are the same as (2) Expenditures, II. Distribution of Costs of “2. Plan of the income and expenditure of the Subsidized Project” of the Form 2, “Brief explanation of subsidized project”.

9. If a group is formed to conduct the Project, the names of the group and the member companies

Note 1: The “costs required for the Subsidized Project” refers to the cost required for performance of the relevant project. As a general rule, the amount must be provided after deducting the amount of the national and local consumption taxes.

Note 2: As for the amount of the “Subsidized Costs”, as a general rule, the amount of the “costs required for the Subsidized Project” eligible for the Subsidy must be provided after deducting the amount of the national and local consumption taxes.

Note 3: The “amount of the Subsidy applied for” refers to the amount of the “Subsidized Costs” for which grant of the Subsidy is requested, and the amount limit is the amount of the “Subsidized Costs” multiplied by the Subsidized Ratio (any amount less than JPY1 shall be rounded down).

Remark: The size of the paper used shall be the Japan Industrial Standards A4 Format.

(Form 2)

Address

Name (Name of Corporation and Title/Name of Representative Person)

Outline of Subsidized Project

1. The implementation plan for the Subsidized Project

(1) Contents and implementation method of the project

- * Provide the following information by project content item.*
- * Specific implementation contents and method, based on clarification of issues for each objective of research and development*
- * Specific implementation content and method for each item of the project content*
- * Specific proposal to improve outcome of the project*
- * Project location (Address and name of the location)*

(2) The implementation timeline

- * Describe the implementation schedule of the project by month for each implementation contents.*
- * Describe the implementation procedure in detail. If the stages of the research and development are different (such as design, development, tests, etc.) in each item, describe the difference clearly.*
- * If the persons in charge of the research and development (manufacturers and subcontractors) are different in each item, describe the organization they belong to clearly so that we can distinctly understand who will actually implement the item.*
- * Set the actual targets for achievement of the project purpose as milestones and describe them for each item.*
- * In setting the milestones, they must be related to the points where delay of the project is foreseen.*
- * In order to prevent delay, alternative options must be described for items with high risk.*
- * Describe major output and input information so that correlation with other projects, comprehensive proposals, partial proposals, etc. can be grasped.*
- * As a plan of the interim report, describe the outputs which will have been able to be achieved at the time of the report and further plan.*
- * In reporting your progress, show your plan and actual progress in a comprehensible manner. Furthermore, describe the up-to-date situation and further work plan, etc. as a reference.*

(3) The project implementation organization

** Provide the implementation organization chart and the number and role of people who are engaged in the project for each item of the project contents (Attachment 1)*

** After clarifying the responsible person for entire project implementation, the project leader (exclusively employed for the project) and sub-leaders responsible for each project item, provide their profile, area of expertise and track record of engagement in similar projects..*

** Describe outsourcing or commissioning, if planned.*

** Describe the name, outline, year, ordering party, etc. of similar projects. If the project was done as your own company's project, state it accordingly.*

** Clearly state the experiences of each participating party if you form a consortium.*

2. Plan of the income and expenditure of the Subsidized Project

(1) Income (Unit: JPY)

Item	Amount
Own fund	
*Bond issuance or borrowing	
Other	
Subsidy	
Total	

*Attach the documents to show the funding plan relating to the relevant bond issuance or borrowing.

(2) Expenditures

I. Summary table (Unit: JPY)

Classification of costs	Costs required for the Subsidized Project	Subsidized Costs	Classification of the cost burden	
			The amount of cost borne by the Subsidized Project Operating Entity	The amount of the Subsidy applied for
Labor Cost				
Operating cost				
Total				

II. Distribution of Costs (provide the details by project item)

**Describe in this sheet or other separate sheets the name of the goods, unit price, man-hour, etc. as basis for the calculation.*

**If you form a consortium, clearly describe the breakdown of each company or organization.*

(Unit: JPY)

Type (Example)	The cost required for the Subsidized Project	Subsidized costs	Amount of the Subsidy applied for	Remarks
【Labor Cost】				
• • •				
Sub total				
【Project Cost】				
Raw material				
Goods purchase				
Outsourcing				
• • •				
Sub total				
Total				

(Note 1) The “cost required for the Subsidized Project” refers to the cost required to perform the relevant project. As a general rule, provide the amount after deducting the amount of the national and local consumption taxes.

(Note 2) As a general rule, provide the “cost required for the Subsidized Project”, which is eligible for the Subsidy after deducting the amount of national and local consumption taxes in the “Subsidized Costs”.

(Note 3) The “amount of the Subsidy applied for” refers to the amount of the “Subsidized Costs” for which grant of the Subsidy is requested, and the amount limit is the amount of the “Subsidized Costs” multiplied by the Subsidized Ratio (any amount less than JPY1 shall be rounded down).

Remark: The size of the paper used shall be the Japan Industrial Standards A4 Format.

3. Financial basis and management system

** Describe the outline of your organization; moreover, describe the grounds on which your organization has necessary management basis for smooth implementation of the project as Annex 2.*

** Describe the grounds on which your organization is capable of managing funds, etc. (such as organization and storage of evidence documents for expenditures). Furthermore, describe the scheme of the management of the funds (responsible persons and their roles).*

** If you form a consortium, all of the above-mentioned items must be described regarding every organization.*

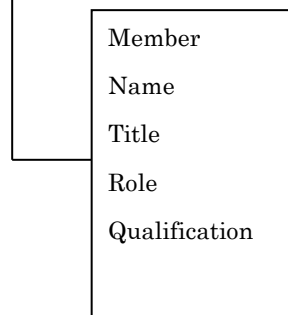
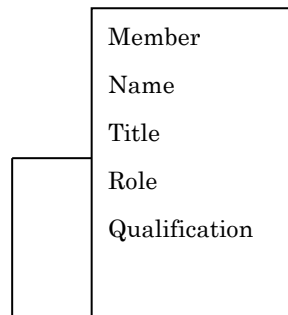
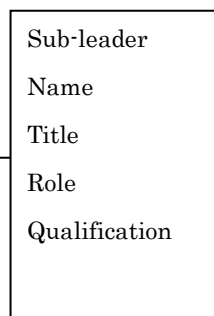
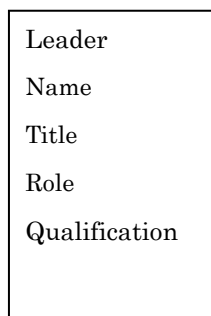
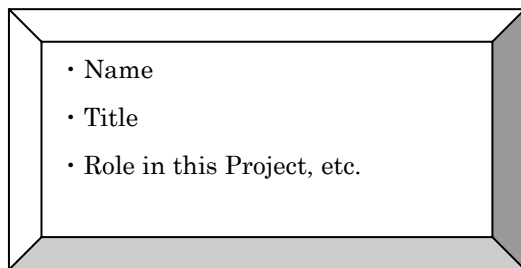
Implementation Organization Chart

<p>Content of the descriptions</p>	<ul style="list-style-type: none"> • Develop an organization chart to show the framework for implementation of the Project • The names, titles and division of roles of the personnel in charge must be contained in the implementation organization chart • Clarify persons exclusively employed for this project described in this Chart; and describe the career background, expertise, area of specialty at work, qualification associated with the project, and other relevant information must be provided about the key personnel.
------------------------------------	--

Operational Implementation Organization

*A concrete description should be provided by showing an implementation organization chart containing the following information for each project item.

*Specify the name of the contact person in case of a joint application



(Annex 2) Outline of your organization

Note: If you form a team and apply, you must fill in this sheet for every participant.

*Fill in the data of the latest accounting year in non-consolidated base.

Company name					
Title/name of the representative person					
Contact information	Tel:		Fax:		
	E-mail:				
Head office's address					
Date of establishment	Date:	Account closing month		Small- or medium-sized company	○ or ×
Capital	JPY in thousands	Number of Employees		(indicate by a circle if the company is a small- or medium-sized company)	
Description of business					
Major shareholders (equity ownership)	○○○ (company limited) (60%)				
	▽□○ (company limited) (30%)				
	□○○ (company limited) (1%)				

(The title and name of the person responsible for above information:

Head of the XX Department, XX XX(Name) and his/her signature)

Please provide the information about all officers in the list below:

Full name in Katakana Full name in Chinese characters	Date of Birth			Sex	Company Name	Title
	Japanese era name Year	Month	Day			
(Example) Taro Keizai Taro Keizai	S 35	01	01	M	Keizai Sangyo Co., Ltd.	President & Representative Director

- (Note 1) Add the columns as appropriate if the provided columns are not sufficient to provide full information.
- (Note 2) Use one-byte characters and put a space between the first and last names to provide the names in Japanese phonetic symbols (katakana).
- (Note 3) Use two-byte characters and put a space between the first and last names to provide the names in Chinese characters.
- (Note 4) The letters T, S or H should be used to indicate the Japanese era names for the date of birth and the year should be indicated by a two-digit number.
- (Note 5) Use M for male and F for female in one-byte characters to indicate the sex.
- (Note 6) For a foreign national, use the alphabet characters to indicate the person's full name in the "Full name in Chinese characters" and the pronunciation of the name in Katakana in the "Full name in Katakana" column.
- (Note 7) For a joint application or a Project C, provide the information about all officers of each and every member (company or otherwise) of the group.

(Remarks) The size of the paper used shall be the Japan Industrial Standards A4 Format.

(Other documents)

- (1) Outline of the company or organization such as a brochure, etc.
- (2) The financial results, and statement of revenues and expenses (for the past one year)
- (3) The articles of association or the act of endowment
- (4) Other supporting documents (as needed)

(Form 3)

Certificate of Conformance to Qualification Requirements for the Project of Research and Development of Processing and Disposal of Solid Waste

I confirm that the applicant satisfies the qualification requirements for this subsidized project.

No.	Requirements	Verification, etc.
(1)	Possessing the organization for properly conducting the relevant subsidized project.	<State that the applicant satisfies the requirements with reasons in detail ><See Form 2 "1. (3) Project Implementation Organization" when necessary.">
(2)	Having the capacity, knowledge and experience required for conducting the relevant subsidized project.	<State that the applicant satisfies the requirements with reasons in detail ><See Form 2 "1. (3) Project Implementation Organization" when necessary.">
(3)	Having the management foundation required for smoothly conducting the relevant subsidized project and sufficient ability to control the funds and other resources.	<State that the applicant satisfies the requirements with reasons in detail ><See Form 2 "(3) Financial basis and management system when necessary.">
(4)	Being able to implement the project in accordance with all the applicable laws and regulations enacted in Japan, and to follow the appropriate accounting procedures in accordance with "Grant Policy for Subsidy for the Project of Decommissioning and Contaminated Water Management" and "Subsidized Project Administration Manual". http://en.dccc-program.jp/files/20150623man.pdf	<State that you understand the statement on the left>
(5)	Not foreseen to be subject to Articles 70 and 71 of the Cabinet Order concerning the Budget, Auditing and Accounting.	<State that it does not apply to the applicant>
(6)	Not fulfilling any of the conditions stipulated in the "Guidelines for the suspension of subsidies controlled by the Ministry of Economy, Trade and Industry and the suspension of designation relating to the contracts". (January 29, 2003, No 1) First column, the second items in Attachment	<State that it does not apply to the applicant>
(7)	Research and development companies which may require approval under the Foreign Exchange Act for any exports and imports should have an establishment of internal compliance program(ICP) under a self-control system about the "standards for exporters, etc. to meet" provided for in Article 55-10 (1) of the Foreign Exchange and Foreign Trade Act.	<Describe meeting this condition in the Form No.5>
(8)	Admitting that the results obtained through this project can be utilized by TEPCO Holdings, Incorporated, etc. to leverage them for Decommissioning and Contaminated Water Countermeasures if they request to do so under the condition that each party is in agreement. Not preventing the utilization by behaviors such as not admitting use of the technology intentionally, asking for unreasonable compensation, etc. in spite of receiving the request.	<State that it is possible>
(9)	In order to make sure of the above-mentioned item, preventing the situation that the results from this project are not able to be utilized for measures for decommissioning and contaminated water management at the Fukushima Daiichi NPS by ceding the	<State that you understand the statement on the left>

	above-mentioned condition in (8) to the successor if the applicant hands over the result to a third party and loses their own right to utilize it accordingly. In the case of a conflict which makes the applicant unable to make sure of the items in (8), the concerned parties must solve it by their own responsibility.	
--	--	--

<Note for Filling out this Form>

In the verification columns, please write the reasons why you verified that the applicant meets the requirements. When filling it out, write "Attachment" if there are any verification documents attached to this form and if not, write "No attachment."

(Form 4)

Input/Output information on Project of Research and Development of Processing and Disposal of Solid Waste

**Please refer to the reference document 1 as an example.*

ID	Requested projects	Offered projects	Contents (outline)	Time when the project is necessary	How to use the information	Remarks
				<i>*Influences of delay (if any)</i>		<i>Such as measures for the case when you cannot ensure the accuracy, cannot keep the timeline, etc.</i>

(Form 5)

Response to Security Export Controls on Project of Research and Development
of Processing and Disposal of Solid Waste

Response to Security Export Controls	
Circle one of the following three options: handled, not handled or not required.	
Handled	Submit relevant documents (export control regulations for security trade)
Not handled	State the date of submission: Year Month:
	State future plans
Not required	State reasons

(Form6)

Personal Data Processing Consent Form

Purposes

In compliance with the Act on the Protection of Personal Information, Mitsubishi Research Institute, Inc.("MRI") requests your consent to use your personal data to evaluate of proposal.

Data Sharing

MRI may share your personal data with cooperating organizations.

Data Retaining

There are cases in which it is necessary to retain your personal data for the necessary period according to the requirements of Japanese law.

Data Management

MRI will protect your personal data securely, including taking necessary measures to prevent leakage, loss, falsification, etc.

I have understood the above and give my consent to MRI to use my personal data for the above Purposes, and to carry out the above Data Sharing and Data Retaining.	
Your Full name	
Your Signature	
Date	

If you wish to modify your personal data or withdraw this consent after submission, please notify us by email to privacy@mri.co.jp.

Mitsubishi Research Institute, Inc.
10-3, Nagata cho 2-chome, Chiyoda-ku, Tokyo, Japan
+81-3-6705-6004, privacy@mri.co.jp

PMS05_20180718

(Reference Document 1)

Table 1 Example of Organization of Input/Output information

ID	Requested projects	Offered projects	Contents (outline)	Time when the project is necessary	How to use the information	Remarks
1_1	Development of investigation technology for inside the nuclear reactor pressure vessels	Development of fuel debris criticality control technology	Needs for sampling of fuel debris	December 2015	Examination of possibility of fuel debris sampling technology	
1_2						
1_3						
1_4	⋮	⋮	⋮	⋮	⋮	⋮

(Reference Document 2)

Table 1 Example of implementation schedule with points of attention

Item	Sub item	Fiscal Year 201X						Fiscal Year 201Y						Remarks (Up-to-date situation)							
		Oct	Nov	Dec	Jan	Feb	Mar	Apr	May	Jun	Jul	Aug	Sep		Oct	Nov	Dec	Jan	Feb	Mar	
Validation on XX	(1) Survey of on-site situation and relevant technologies			█	█	▽															○○○○
	(2) Machinery design				█	█	▽														○○○○
	(3)Machinery production							█	█	▽											Describe up-to-date situation and work schedule
	(4) Establishment of tests plan			█	█	▽															○○○○
	(5) Tests implementation												█	█	▽						Result of machinery development
	(6) Evaluation of tests result																				★
	(7) Compilation of results																				█
Validation on XX (when alternatives are needed)	(1) YY																				Describe the available results foreseen at interim report and further plan
...	...																				
Major milestones					▲				▲	▲			▲		▲				▲		

(Reference document 3)

Regarding Subsidized Cost Items

Regarding the cost items defined in “The Decommissioning and Contaminated Water Management Project Implementation Guidelines”, please refer to the following table.

Cost item	Description	Correspondence with “Subsidized Project Administration Manual”
I. Personnel cost	Personnel cost for working hours of those engaged in the project.	3. Accounting process on personnel cost
II. Project cost		
Raw material cost	Expenses necessary for purchasing raw material or material necessary for implementing the project ※Here, “raw material” denotes what loses its nature and is used for production or manufacturing of entirely new ones; “material” denotes what does not lose its nature and is a constituent element of produced items or manufactured items only through being put to new application.	7. Accounting procedures regarding supplies expenses
Supplies expense	Cost for the purchase of goods necessary for performing the project but not belonging to raw material cost (however, only those verifiable for the use in the project)	7. Accounting procedures regarding supplies expenses
Design, production and processing costs	The thing which the subsidized entity cannot design, produce or process, or the cost necessary for outsourcing what is appropriate and does not belong to Facility and equipment cost to other entity. (contract for work)	8. Accounting procedures regarding outsourcing expenses
Facility and equipment cost	Cost necessary for purchasing, production or installation of facility or equipment necessary for undergoing the project ※The actual contents of the “facility and equipment” shall be “buildings and accompanying facilities”, “structures” and “machinery and equipment” stipulated in “Ministerial Order regarding depreciable life of depreciable assets, etc.” (Fifteenth Order of Ministry of Finance, 1965).	6. Accounting procedures regarding equipment expenses and rental and hire fees 8. Accounting procedures regarding outsourcing expenses
Procurement cost	Cost for the thing which is necessary for undertaking the project and does not belong to facility and equipment cost (at the same time, can be usable more than one year)	6. Accounting procedures regarding equipment expenses and rental and hire fees
Survey cost	The cost for outsourcing to another entity what the subsidized entity cannot survey or analyze by itself or is not suitable to be conducted by the subsidized entity itself (contract for work)	8. Accounting procedures regarding outsourcing expenses

Outsourcing cost	Cost for outsourcing to other business operator what subsidized company cannot implement on its own or not appropriate to do so and does not belong to design, production and processing costs, facility and equipment cost or survey cost (contract for work)	8. Accounting procedures regarding outsourcing expenses
Travel expenses	Cost for domestic business travels and overseas business travels necessary for performing the project.	4. Accounting process for travel expenses
Gratuities	Gratuities necessary for performing the project (gratuities for external experts who attended meetings, seminars, symposiums, etc., gratuities for giving seminars, writing of drafts, cooperation with research, etc.)	5. Accounting process for meeting expense and rewards
Rent and hire	Cost for lease and rental of machinery, equipment and the like necessary for performing the project	6. Accounting procedures regarding equipment expenses and rental and hire fees
Other expenses necessary for undertaking the project	Cost for other expenses necessary for undertaking the project which does not belong to any other items Examples Commission fee: the cost for outsourcing to other entities of the cost for assistant personnel or of the cost for temporary staffing, which cannot be done or what is not appropriate to be done by the subsidized entity	11. Accounting procedures regarding other miscellaneous expenses 12. Accounting procedures regarding expenses for commission 10. Accounting procedures regarding assistant personnel costs, etc.