

(Unofficial Translation)

**Guidelines for applying to the “Decommissioning, Contaminated Water and Treated Water Management (Development of Investigation Technology of Inside of RPV (Development of Investigation Technology of Inside of RPV by using Existing Pipes))”**

Date: March 18, 2024

Management Office for the Project of Decommissioning,  
Contaminated Water and Treated Water Management

The Management Office for the Project of Decommissioning, Contaminated Water and Treated Water Management (hereinafter referred to as “PMO”) solicits entities to implement subsidies for the "Subsidized Project of Decommissioning, Contaminated Water and Treated Water Management (Development of Investigation Technology of Inside of RPV (Development of Investigation Technology of Inside of RPV by using Existing Pipes)). Details of the project are stipulated in this Guidelines; furthermore, the procedures for implementation of the project are stipulated in the “Grant Policy for Subsidy for the Project of Decommissioning, Contaminated Water and Treated Water Management”.

#### 1. Purpose of Project

This project aims to support development of technologies contributing to decommissioning, contaminated water and treated water management of the Fukushima Daiichi Nuclear Power Station (hereinafter referred to as “Fukushima Daiichi NPS”) of the Tokyo Electric Power Company Holdings, Incorporated (hereinafter referred to as “TEPCO”) based upon the “Mid-and-Long-Term Roadmap towards the Decommissioning of the Fukushima Daiichi Nuclear Power Station of Tokyo Electric Power Company Holdings, Incorporated” (hereinafter referred to as “Mid-and-Long-Term Roadmap”) and “The Decommissioning Research and Development Plan for FY 2024” (The 123rd meeting of Secretariat of the Team for Decommissioning, Contaminated Water and Treated Water Countermeasures / PMO), so that the decommissioning, contaminated water and treated water management of the Fukushima Daiichi NPS can be implemented smoothly, and that may lead to the improvement of Japan’s science and technology standards.

Please note that this project is implemented under the engineering and project administration activities performed by TEPCO in the Fukushima Daiichi NPS, and the results obtained from this project will be utilized for the engineering activities conducted by TEPCO.

#### 2. Contents of Project

In this project, in order to verify the situation inside the reactor pressure vessel (hereinafter referred to as the "RPV") and the internal conditions such as radiation dose, ensuring confinement functions

by remote operations under the environmental conditions such as high-dose radiation and highly radioactive contamination, it shall be developed a drilling device to construct an access route (new opening work etc.) and a device and system to carry the investigation equipment into the RPV as the purpose of this project.

For investigation inside the RPV, actual applicability of two types of methods had been examined until FY2019: one was Access-from-Top Investigation Method, the method to get access to the reactor core from the top, and the other is Access-from-Side Investigation Method, the method to get access to the reactor core from the side. In addition, since the Access-from-Top Investigation Method and the Access-from-Side Investigation Method may take a certain amount of time to apply them to the on-site, it is also important to advance the development of a method that has the potential to carry out the internal investigation of the RPV earlier. Therefore, from FY2020, a conceptual study of the access to the bottom of the RPV (hereinafter referred to as “Access-from-Bottom Investigation Method”) investigate inside the RPV has been proceeded by inserting the investigation devices thorough the opening that assumed to be existed at the bottom of the RPV.

As a method which is able to conduct the investigation of inside of the RPV earlier from not the RPV bottom but the upper part of reactor core, it is assumed a feasible method which inserts the camera inside of the RPV using existing pipes. TEPCO is now studying an investigation through small diameter piping (instrumentation piping, etc.) using a small investigation device. Additionally, in order to apply it to larger diameter pipes, the following issues had been identified: the investigation device must be able to pass by drilling, etc. through blockages such as check valves and tees in the middle of the pipes and the investigation device must be moved above the vertical pipes section, and others. Therefore, as a part of the development of investigation technologies of inside of the RPV using existing pipes since FY2022, after applicable existing pipes routes and investigation devices (radiation resistant camera, etc.) had been studied, the technology development of equipment necessary for the investigation device to pass through the existing pipes and reach the RPV has been being conducted. By the end of FY2023, as existing pipes which are able to be used for investigation inside of the RPV from the access route and on-site environment, core spray (CS) system, main steam (MS) system and reactor primary loop recirculation (PLR) system have been selected, necessary functional requirements for constructing the route, moving inside pipes and confirming the conditions inside the reactor have been summarized. Additionally, the prototype of device has been developed, the function confirmations have been conducted by in-factory tests, and then the issues for on-site application have been identified.

In this project, for CS system and MS system expected to apply on-site, review and improvement etc. of each the device shall be conducted for issues identified through the function confirmation tests, and confirmations for on-site application shall be conducted through mock-up tests simulated on-site.

At the start of this project, TEPCO’s needs shall be considered, and the project shall be proceeded after consultation with related parties (the Ministry of Economy, Trade and Industry (hereinafter referred to as “METI”), TEPCO, and PMO).

(1) Development of Investigation Technologies of Inside of the RPV using Pipes of CS System

[1] Formulation of the investigation plan for investigation of inside of the RPV using pipes of CS system and the development plan for the access/investigation device

Following issues had been identified through the function confirmation tests conducted by the end of FY2023.

- A) Measures for stacks during passing through piping joints and valves etc. in the middle of pipes
- B) Measures for abrasive generating during cutting the valves using abrasive water jet (AWJ)
- C) Confinement performance during inserting the device inside pipes from reactor buildings (R/B)

The measures which are able to be used for these issues shall be established, and it shall be formulated the investigation plans of inside of the RPV using pipes of CS system and the development plans for the necessary access/investigation device.

[2] Development of the access/investigation device for investigations of inside the RPV using pipes of CS system

Based on the development plans formulated in the above [1], the prototype of the access/investigation device shall be developed, and the improvement of the issues shall be confirmed by in-factory tests. In addition, it shall be conducted mock-up tests simulated the process and full-scale facilities for investigations of inside of the RPV carrying the investigation devices into the pipes of CS system to confirm its on-site applicability.

(2) Development of Investigation Technologies of inside of the RPV using Pipes of MS System

[1] Formulation of the investigation plans for investigation of inside of the RPV using pipes of MS system and the development plans for the access/investigation device

Following issues had been identified through the function confirmation tests conducted by the end of FY2023.

- A) Measures for stacks in the middle of pipes
- B) Measures for abrasive generating during cutting the valves using AWJ
- C) Confinement performance during transporting the device from turbine buildings (T/B)
- D) Interference possibility for on-site existing structures during transporting the device from T/B

The measures which are able to be used for these issues shall be established, and it shall be formulated the investigation plans of inside the RPV using pipes of MS system and the development plan for the necessary access/investigation device.

In addition, for the issues A) in the above, the technology for moving inside pipes developed

for PLR system by the end of FY2023 have a possibility to be able to apply MS system. Therefore, it is possible to consider investigating as a proposal of the measures.

[2] Development of the access/investigation device related to investigation of inside of the RPV using pipes of MS system

Based on the development plan formulated in the above [1], the prototype of the access/investigation device shall be developed, and the improvement of the issues shall be confirmed by in-factory tests. In addition, it shall be conducted mock-up tests simulated the process and full-scale facilities for investigation of inside RPV carrying the investigation devices into the pipes of MS system to confirm its on-site applicability.

\*When preparing a proposal for this project, please refer to the project results listed below. See below for the link to the results. In addition, after the grant decision is made, the project should start subject to publication of the project result of FY2023.

- “Development of Investigation Technology of Inside of RPV (Development of Investigation Technology of Inside of RPV by using Existing Pipes)”(FY2022)

Link to the FY2019 Project Results HP: <https://en.dccc-program.jp/5344>

<Links to the Project Results HP>

<https://en.dccc-program.jp/category/result>

### 3. Operation of research and development

#### (1) Gathering Domestic and Overseas Wisdom

Projects must be conducted by utilizing Japan and abroad wisdom. In particular, they must consider introducing necessary technologies and knowledge both from Japan and abroad broadly. In case of development of machines and equipment, establishment of common basis of the machines and equipment (utilization of widely used goods and goods which have already been developed, etc.) must be taken into account as much as possible in order to promote reasonable development. Furthermore, the development of evaluation method is important to be confirmed and reviewed objectively by third parties such as academic societies, etc. Hence, such validation must distinctively be placed in the development plan or a milestone.

In implementing the project by introducing Japan and abroad technologies and knowledge, if necessary, the external organization shall be chosen through a solicitation such as a open competitive bidding in a timely manner; and in order to ensure transparency and fulfill accountability, the solicitation information must be published on the website and the link to the information must appear the PMO’s website, with the intention to disseminate it widely.

(2) Establishing Decommissioning Industrial Cluster to Fukushima and Innovation Coast Framework Realization

It shall be considered to work with companies, which run business in Hamadori area and other regions in Fukushima prefecture\*, in an aim to promote local companies engaged in decommissioning related industry and establish decommissioning industrial cluster to Fukushima.

It shall be also considered to use decommissioning related facilities (e.g. Naraha Center for Remote Control Technology Development (mock-up testing facility)), which play a role in Fukushima Innovation Coast Framework.

\*Area

Iwaki city, Soma city, Tamura city, Minami Soma city, Kawamata town, Hirono town, Naraha town, Tomioka town, Kawauchi village, Okuma town, Futaba town, Namie town, Katsurao village, Shinchi town, Iitate village

(3) Human resource development for medium and long-term

Efforts need to be made to strengthen the relationship with universities, research organizations, etc. through implementing joint research, etc. from the viewpoint of human resource development in the middle and long-term. Cooperation also needs to be made positively to strengthen the activities which focus on human resource development by the government and related organizations.

(4) Clarification of tests conditions and specifications for development

Consideration of requirement level necessary for implementing decommissioning activities must be done before commencement of elemental tests and equipment design; furthermore, evaluation of to what extent existing technologies can be utilized must be done as quantitatively as possible (Present the current Technology Readiness Level (TRL)). Based upon these, information on the target of the degree of the tests and equipment development compared to the requirement level must be shared with concerned organizations, and the test conditions and design specifications must be established.

(5) Definition of criterion for judgment of degree of objective achievement

Comprehensible criteria which can be a measure for the judgment of objective achievement of the project must be defined using numerical values, etc. ( Present the current TRL); and they must be validated whether or not the objective will have been achieved at the completion of the project.

Table 1 Definition of Technology Readiness Level (TRL)

Level	Definition corresponding to this project	Phase
7	At the stage of completion of practical utilization	Practical use
6	At the stage of being demonstrated in the field	Field demonstration
5	At the stage of production of prototype with the scale of practical use, and demonstration in a simulated environment such as in a factory, etc.	Demonstration of simulation
4	At the stage of implementation of function tests at the level of trial production as a process of development and engineering	Research for practical use
3	At the stage of proceeding with development or engineering using application or combination of existing experiences. Or at the stage of proceeding with development or engineering based upon elementary data in the area with lack of existing experiences.	Application research
2	At the stage of proceeding with development or engineering in the area nearly without applicable existing experiences, and with setting up the specifications.	Application research
1	At the stage of clarifying elementary contents regarding development or engineering.	Elementary research

(6) Cooperation with decommissioning activities and associated research and development projects

Clarify how the results obtained could contribute to the decommissioning activities and associated research and development projects, and positive cooperation and collaboration with the associated research & development projects shall be conducted. For this purpose, it is necessary to share harmonized input /output information among the associated research and development projects. In order to realize this information sharing, coordination among the entities involved must be done using Form 4 at the commencement of the project and other suitable timings; and it must also be regularly shared with and confirmed by PMO and other concerned entities. Furthermore, the information on implementation of the project (such as progress situation, acquired data, challenges, etc.) must be shared with and offered to PMO and the concerned entities in a timely and appropriate manner. Also, Non-Disclosure Agreement must be concluded among the Subsidized Project Operating Entities, the associated research & development project entities and PMO, if necessary. PMO will conduct the necessary coordination.

(7) Research management

The project must be proceeded with bearing in mind that the achievement goals of the project (such as the contents of outputs, target schedule, etc.) were established so as to achieve high-rank goals of this project.

Furthermore, it is necessary to create a flexible implementation organization that can reflect the following matters to the project, because understanding about the situation of the inside of PCV and necessary R&D to retrieve fuel debris is still limited, and a great deal of uncertainties

remain in respect of the preconditions for research development.

- [1] Discussions about the Mid-and-Long-Term Roadmap, discussions at meetings of the Secretariat of the Team for Decommissioning, Contaminated Water and Treated Water Countermeasures, and instructions and advices given by the Agency for Natural Resources and Energy, and so forth.
- [2] Discussions concerning the “Technical Strategic Plan for Decommissioning of the Fukushima Daiichi Nuclear Power Station of Tokyo Electric Power Company Holdings, Inc.”, discussions at meetings held by and instructions and advice given by Nuclear Damage Compensation and Decommissioning Facilitation Corporation, and so forth.
- [3] Progress management, instructions and advices given by PMO.

In particular, in order to achieve the project outcome targets, it is important to promptly understand and reflect the current status of Fukushima Daiichi NPS, the progress of TEPCO’s engineering, internal investigation, R&D, on-site working environment improvement such as dose reduction, lowering water level, space availability, etc. It is also important to check whether the prerequisites of the project are satisfied not only at the early stage of the project but also at any time to during the project from the viewpoint of on-site applicability, and to take measures promptly if any issues are found.

Therefore, under the project management of TEPCO, it is required to establish organization to conduct R&D. When grant application, the application shall be made jointly with TEPCO. However, TEPCO does not claim for any expenses for this project. When working at Fukushima Daiichi NPS, etc. for on-site investigation and demonstration test and so on, sufficient coordination shall be made beforehand with TEPCO, management system shall be constructed with understanding the compliance issues and precautions, etc., and appropriate security measures shall be taken.

#### (8) Progress report

The entity is required to report implementation plan, progress situation, project results, etc. to PMO on request. Specifically, the followings are included.

- [1] Interim report meetings and final report meeting: For the purpose of confirming created results, advancing the result on the future and improving on-site applicability, the entity is required to report contents of research and development to committee members and concerned organizations about once in six months.
- [2] Concerned organization meeting: For the purpose of discussion for issues of proceeding projects among concerned organizations, the entity is required to report implementation plan and progress situation after launched new subsidized project or at key times of project progress.
- [3] Progress report: the entity is required to report project progress by using the example of implementation schedule (Reference Document 2) etc. every end of month.
- [4] Project review meeting: For the purpose of confirming whether the plan is for the target

established at the start of project, and engineering for on-site and on-site applicability, the entity is required to report the contents of research and development to concerned organizations and experts designated by PMO about once or twice a year.

[5] Report of project outcome: The entity is required to submit final report of project outcome for the specific outcome of subsidized project. (The report at final report meeting is possible to utilize for this report of project outcome)

[6] Project result report: After the completion of the project, the entity is required to submit project result report.

The information reported and submitted to PMO may be shared among concerned organizations based on the “5. Implementing Scheme” considering the non-disclosure information mentioned in “Act on Access to Information Held by Administrative Organs (Act No. 42 of 1999) ”.

(9) Enhancement of dissemination of information

Comprehensible explanation to the public regarding the project contents and results is indispensable. The entity is also required to actively cooperate with the government and the concerned organizations for dissemination of information. In addition, any results of the project, which could be made public, should be summarized as a report of project outcome for publication and disclosed as soon as possible after its completion.

(10) Preparation of other options

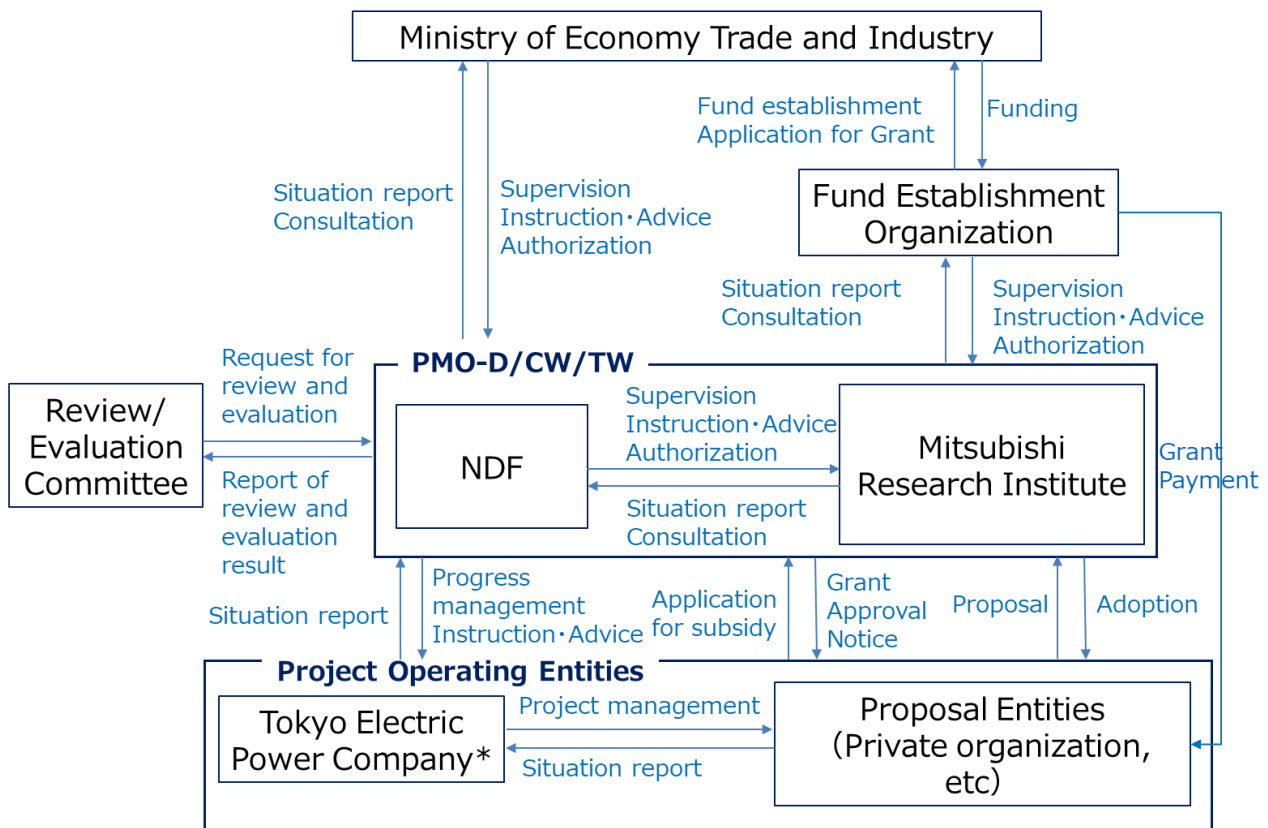
Alternative options should be prepared if necessary in advance for the case that the project cannot be proceeded with as planned during the project term. If the alternative options are prepared or revised, the information must be notified to PMO.

#### 4. Project Term

- From the effective day (of the grant) to March 31, 2026



## 5. Implementing Scheme



\*After the proposal is adopted, application shall be made jointly with TEPCO. However, TEPCO does not claim for any expenses for this project.

## 6. Application Requirements

The private companies, etc. satisfying all of requirements (1) to (9) shown below are qualified to apply for the subsidies. An application from a consortium is also acceptable. In that case, a managing legal entity must be appointed out of each consortium and submit the project proposal. (Please note that no managing legal entity may commission the entire work to another legal entity.)

- (1) Possessing the organization for properly conducting the relevant subsidized project. If the case to subcontract to or jointly implement with a third party a part of the subsidized project, for the creation of project outcome, the appropriate cooperation organization should be established to manage the project.
- (2) Having the capacity, knowledge and experience required for conducting the relevant subsidized project.
- (3) Having the management foundation required for smoothly conducting the relevant subsidized project and sufficient ability to control the funds and other resources.
- (4) Being able to follow the appropriate accounting procedures in accordance with the “Grant Policy for Subsidy for the Project of Decommissioning, Contaminated Water and Treated Water

Management” and the “Subsidized Project Administration Manual (\*)”. With regard to overseas entities, as a general rule, being able to prepare the evidenced documents in Japanese or English and present them in Japanese territory on demand from the PMO.

(\*)<https://en.dccc-program.jp/files/20230224man.pdf>

- (5) Not foreseen to be subject to Articles 70 and 71 of the Cabinet Order concerning the Budget, Auditing and Accounting.
- (6) Not fulfilling any of the conditions stipulated in the “Guidelines for the suspension of subsidies controlled by METI and the suspension of designation relating to the contracts”. (January 29, 2003, No 1) First column, the second items in Attachment
- (7) The applicant must have a compliance system under a self-regulated structure which meets the "Standards for Exporters, etc. to Meet" provided for in Article 55-10 (1) of the Foreign Exchange and Foreign Trade Act. We will confirm this system using (Form 3) "Response to Security Export Controls" when selecting applicants, so please use this form to fill in the required items and submit the required documents.

[Reference] Standards for Exporters, etc. to Meet

Regulations to be observed by parties engaged in export or provision of technology in the course of trade (exporters).

Exporters that do not handle security-sensitive "specified important goods, etc." have a duty to 1) nominate a person responsible for checking goods, etc., and 2) provide guidance to managers and export workers on compliance. Exporters that do handle security-sensitive "specified important goods, etc." have a duty to 1) identify a representative as the responsible person, 2) set out an export control system, 3) set out a procedure for checking regulated/non-regulated goods, 4) set out a procedure for confirming the usage and consumer, and confirm these in accordance with that procedure, and 5) confirm that the goods to be shipped coincide with the confirmed non-regulated goods at the time of shipping.

- (8) Admitting that the results obtained through this project can be utilized by TEPCO, etc. to leverage them for Decommissioning, Contaminated Water and Treated Water Countermeasures if they request to do so under the condition that each party is in agreement. Not preventing the utilization by behaviors such as not allowing to use the technology intentionally, asking for unreasonable compensation, etc. in spite of receiving the request.
- (9) In order to make sure of the above-mentioned item, preventing a situation where the results from this project are not be able to be utilized for Decommissioning, Contaminated Water and Treated Water Management Countermeasures at the Fukushima Daiichi NPS by ceding the above-mentioned condition in (8) to the successor if the applicant transfers the result to a third party and loses their own right to utilize it accordingly. In the case of a conflict which makes the applicant unable to make sure of the items in (8), the concerned parties must solve it by their own responsibility.

## 7. Requirement Conditions for Grant Decision

(1) Number of proposals to be adopted : One proposal

(2) Subsidy rate and maximum amount of subsidy

The subsidy is fixed in JPY.

Maximum amount: 3,500,000,000 JPY

Subsidies are paid in JPY. The contents of the project, amount of the subsidy, etc. will ultimately be settled only after coordination with PMO.

(3) Time of Payment

In principle, the subsidies are paid after the project is completed.

\*Please note that cases where the payment (i.e. the payment by estimate) before the completion of the project is permitted are limited.

(4) Confirmation of the amount of payment

The amount to be paid is decided based on the Project Result Report which is submitted by the operating entities after the project is complete as well as the results of the survey at the verification site and/or the office.

The amount to be paid will be the total of the expenses to be covered by the subsidies, which do not exceed the granted subsidy amount and have spent actually. For this reason, the books and evidential documents such as receipts are necessary for supporting all the expenses. All the expenses will be strictly inspected and evaluated. Thus, the expenses not meeting the conditions mentioned above may be rejected.

(5) Grasp the implementation organization at the time of submitting the Project Result Report

Since it is necessary to confirm the implementation organization of the project, when submitting the Project Result Report after the project is completed, as expenses are covered by the subsidy in the case of outsourcing or commissioning contract, the Subsidized Entity must attach the implementation organization document (\*) describing the name of the contractors (only for transactions of 1 million yen or more including tax), their relationship with the Subsidized Entity, their address, the contract amount and the contract content.

(\*) This document is to be confirmed at the inspection.

"travel expenses", "meeting expenses", "gratuities", "equipment expenses (including rent and hire fees)", "assistant personnel costs (including temporary staffing)" are not eligible.

In the case of subcontracting or recommissioning from the contractors (in the case of subcontracting etc., limited to transactions of 1 million yen or more including tax), please describe their information in the implementation organization document same as above (There is no need to describe the contract amount for sub-subcontracting or re-recommissioning).

### [Implementation Organization Document Description Template]

In principle, the implementation organization should be presented in the Organization Table as shown below and include the implementation organization chart. There is no prescribed form

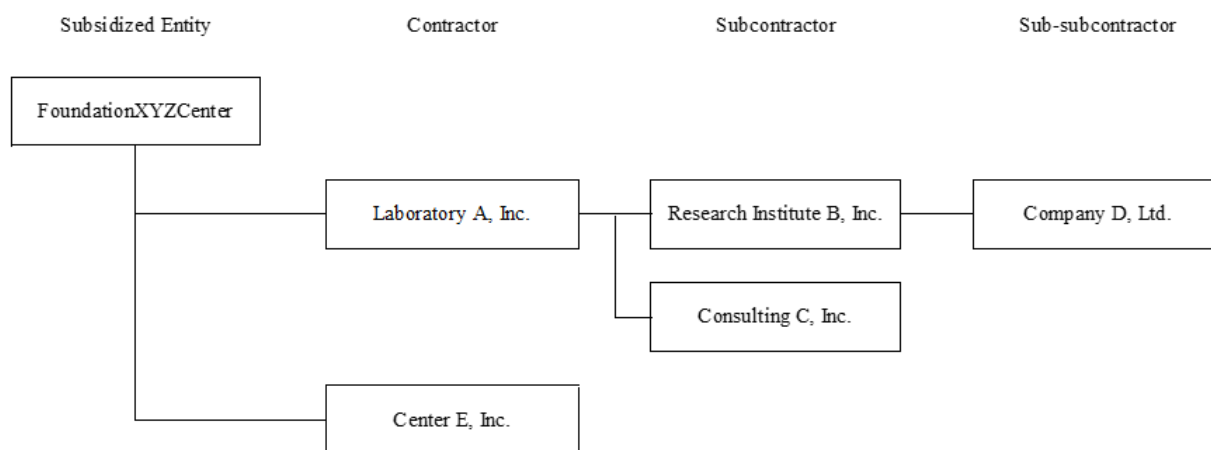
if the implementation organization, the name of the contractors, their relationship with the Subsidized Project Operating Entity, their address, the contract amount, and the contract content are clearly stated on the document.

**Implementation Organization Table (limited to contract of work/service agreement of 1 million yen or more including tax)**

Name of Outsourcing/Commissioning Company	Relationship with Subsidized Entity	Address	Contract amount (with tax)	Contract content
Laboratory A, Inc.	Contractor	XXX-ku, TokyoXXX	*Using Arabic numerals, show amounts in yen value	*Fill in as detail as possible
Research Institute B, Inc.	Subcontractor (Subcontractor of Laboratory A, Inc.)	Refer to the sample above	Refer to the sample above	Refer to the sample above
Consulting C, Inc.	Subcontractor (Subcontractor of Laboratory A, Inc.)	Refer to the sample above	Refer to the sample above	Refer to the sample above
Company D, Ltd.	Sub-subcontractor (Subcontractor of Research Institute B, Inc.)	Refer to the sample above	No need to fill in (*)	Refer to the sample above
Center E, Inc.	Contractor	XXX-ku, TokyoXXX	*Using Arabic numerals, show amounts in yen value	*Fill in as detail as possible

(\*) Company D, Ltd. is a sub sub subcontractor from the standpoint of the Subsidized Company so there is no need to write the contract amount.

**Implementation Organization Chart (limited to contract of work/service agreement of 1 million yen or more including tax)**



## 8. Application Procedure

### (1) Application Period

Commencement: Monday, March 18, 2024

Deadline: By 10:00 AM local time on Tuesday, April 16, 2024

We will not accept any proposals after this deadline.

### (2) Information Session

Date and Time: 14:30 – 15:00 on Wednesday, March 27, 2024

Venue: Web Conference

If you would like to attend the session, please inform the contact point written in “13. Contact” by 12:00 AM local time on Tuesday, March 26, 2024 via email. After that, we are going to inform you of how to access web conference. The session will be held in Japanese. If you need an interpreter, please make arrangements on your own (You are responsible for the expense). If you need an information session in English, please consult with PMO by the above deadline via email. Please note that there is possibility to limit the number of participants.

When making contact, please title your e-mail “Register for attendance to the information session for ‘Project of Decommissioning, Contaminated Water and Treated Water Management’” and include the “corporate or organization name,” “name of the attendee,” “department,” “phone number,” “e-mail address,” and “subsidized project name to apply” in the main text.

To applicants from the EEA member states:

Private information will be used only in the working related to explanation meetings and will not be distributed to any other organizations. When you have provided us with such information, we assume that we have received it with your clear understanding that you submit it in agreement to the above-said condition.

### (3) Application form and other documents to be submitted

[1] Please submit the following documents in person, by mail, or by e-mail. Please title your file “Application for the subsidy program ‘Project of Decommissioning, Contaminated Water and Treated Water Management (Development of Investigation Technology of Inside of RPV (Development of Investigation Technology of Inside of RPV by using Existing Pipes))’”.

- Application form (Form 1)
- Outline of Subsidized Project (Form 2)
- Certificate of Conformance (Form 3)
- Input/ Output information (Form 4)
- Response to Security Export Controls (Form 5)
- Personal Data Processing Consent Form (Form 6)
- Other documents
  - Outline of Corporation or Organization (such as a brochure, etc.)
  - The financial results, and statement of revenues and expenses (of the last year)
  - The articles of association or the act of endowment
  - Other supporting documents

\* You can describe the application documents in Japanese or English. If you bring them with you or submit them by mail, one CD-ROM must be submitted along with 1 copy using

A4 paper. In case that you bring them in person, please inform us of the date beforehand. In case that you submit them by e-mail, please attach 1 copy via email to the email address for application. As a general rule, the file format must be, MS-Word, MS-PowerPoint, MS-Excel or PDF. If you have unavoidable reasons not to be able to use these formats, please contact us.

\* If your proposal is adopted, there is a possibility that Input/ Output information will be released to other entities.

[2] All the application documents submitted will not be used for any purposes other than the evaluation in the course of the selection process. Please note that the application documents submitted will not be returned. We take the utmost care to preserve confidentiality. However, if your proposal is adopted, the information except the non-disclosure information (i.e. the personal information, the information detrimental to the legitimate interests of legal entities) may be disclosed under the “Act on Access to Information held by Administrative Organs” (Act No. 42 enacted on May 14, 1999).

To applicants from the EEA member states:

Private information included in application documents will be used only in the evaluation. Therefore, PMO will not distribute such private information to any other organizations besides METI, Fund establishment organization, NDF, and Review/Evaluation committee. When you apply for the subsidy program, you must clearly understand the above-said condition and submit Form 6.

[3] The costs spent for issuing the application documents and other documents will not be included in the expenses. Also, the costs spent for issuing those documents will not be compensated for regardless of whether the proposal is adopted or not.

[4] The matters described in your proposal are considered to be the fundamental policies which should be observed during the project. Consequently, please be sure to describe only the matters which are feasible within the budget. Also, please note that even if your proposal is adopted, it may be rejected later on if you make a significant change to it at your discretion.

[5] Appropriateness of the cost breakdown must be shown using supplemental explanation documents.

#### (4) Place of submission

The application documents must be delivered to the following address via hand-carry, mail or email, etc. In case that you bring them in person, please inform us of the date beforehand.

Toranomon Building 7th Floor,  
1-12 Tranomon 1-chome, Minato-ku,

Tokyo 105-0001, JAPAN

Contact: Masaki Kawai, Kazuhito Yoshida

Email address for submission: hr-apply@mri.co.jp

- \* Please DO NOT send the application documents via fax. Incomplete documents will be rejected and not subject to evaluation. Therefore, please carefully read and follow the procedures for application to correctly fill out the documents.
- \* Any application documents submitted after the closing date will not be accepted. If you send the documents by postal mail, they may not be delivered by the designated time on the closing date. Consequently, you are advised to mail them sufficiently ahead of the closing date.

## 9. Evaluation and Adoption

### (1) Method of Evaluation

Applications will firstly be evaluated through paper screening, so that the applicants for the presentation to the review committee can be selected. The review committee is planned to be held in late April 2024. Depending on the capacity of the venue, the number of the participants to the presentation may be restricted. Furthermore, hearings and on-site investigation may be conducted as required; and submission of additional documents may be requested.

### (2) Evaluation Criteria

Applications are to be comprehensively evaluated based upon the following criteria. The details of the criteria are described in the “Criteria for reviewing proposals and allocation of points for items to be reviewed”.

#### [1] Objective, contents, implementation method, and applicability to countermeasures for decommissioning (Including on-site applicability)

- It shall be evaluated whether or not the Project objective corresponds to the project purpose described in the “Guidelines for applying”.
  
- It shall be evaluated whether or not the contents of the project are consistent with the Project content indicated by the “Guidelines for applying”, and described in detail in consideration of applicability to countermeasures for decommissioning (including on-site applicability).
  
- It shall be evaluated whether or not the project implementation method is consistent with the objective and contents of the project.

#### [2] Project Implementation Schedule

- It shall be evaluated whether or not an appropriate project implementation schedule is indicated for the objective and contents of the project.

### [3] Project Implementation Organization

· It shall be evaluated whether or not the applicant has an accumulation of indispensable expert knowledge to implement the project as the project implementation organization, and also whether or not the employees to be engaged in the project have an accumulation of indispensable expert knowledge to implement the project, and then whether or not the applicant has ever implemented other similar projects as an organization. Additionally, it shall be also evaluated whether or not it is described that the applicant makes contributions to the revitalizing local economy through the implementation of the project such as working with companies which run business in the Hamadori area and other regions (\*) in Fukushima prefecture, or using decommissioning related facilities which play a role in Fukushima Innovation Coast Framework. Moreover, it shall be evaluated whether or not the project implementation organization including the project leader is clearly described, and then it has the implementation ability and the coordination structure to consider/judge the applicability to countermeasures for decommissioning (including on-site applicability).

\*Area:

Iwaki city, Soma city, Tamura city, Minami Soma city, Kawamata town, Hirono town, Naraha town, Tomioka town, Kawauchi village, Okuma town, Futaba town, Namie town, Katsurao village, Shinchi town, litate village

### [4] Project Cost

· It shall be evaluated whether or not the project costs are appropriately allocated to the project objective and contents.

### [5] Financial Basis and Management Structure for Implementation of Project

· It shall be evaluated whether or not the applicant has a financial basis and management structure for implementation of the project.

### (3) Decision and Announcement of Results

PMO will release the adopted entities on our website, etc. The adopted entities will be notified of the result.

## 10. Grant Decision

The project shall be initiated after the adopted entity submits a grant application for the subsidy to PMO and PMO has sent a notice of grant decision in return.

It should be noted that there may be changes in the details, composition and scale of the project as well as its budget between the decision of adoption and grant, as a result of consultation with the PMO. Also, please be aware that the grant decision may not be notified if the adopting



requirements are not met.

Although subsidized project operating entities may be provided with information required to implement the project after the decision of grant, they may be requested to observe the confidentiality depending on the nature of the information.

Information on the decision of grant of the subsidy (adopted date, the entity adopted (granted), effective date of the grant, corporation number in Japan, value of grant, etc.) will be shown on "gBizINFO"\* in principle.

\* "gBizINFO" by METI is a system, with the start of the 'My Number' system considered, to link a corporation number in Japan to corporation information such as those regarding subsidy and prize-giving. Anybody can execute batch retrieval/browsing in the system. With this system, expansion of new businesses, reduced costs in information acquisition, and more efficient businesses are expected in business enterprises and public offices.

Web address: <https://info.gbiz.go.jp> (Japanese text only)

## 11. Allocation of Expenses

### (1) Classification of Expenses Covered by Subsidy

The expenses covered by the subsidy shall be those directly required for the implementation of the project and those required for compiling the project results. The specific items are listed below. Please refer to "Reference document 3" for an explanation of each cost items.

Items of Expense	Description
(1) Labor Costs	Expenses for personnel required to implement the subsidized project.
(2) Operating Costs	Expenses for raw materials, consumables, design/fabrication/processing, facility/equipment, goods purchase, research, outsourcing, travel, remunerations, rent/depreciation and other necessities.

### (2) Expenses not to be Included in Expenses Covered by Subsidy

- Office supply equipment (furniture such as desks, chairs and bookshelves, office machinery and so forth) with which the applicants should already be provided when considering the nature of the project.
- Expenses for handling accidents and disasters that occurred during the project. (However, cancellation fees incurred by reasons not attributable to subsidized project operating entities may be directly included as an expense. Please consult the person in charge on this matter.)
- Expenses unrelated to the project

### (3) Exclusion of Consumption Tax from Expenses Covered by Subsidy

If the national and local consumption taxes (hereinafter referred to as "consumption tax") are included in the subsidy amount, the applicants shall be requested to submit a report after the settlement of consumption tax amount, according to the Grant Policy for Subsidy.

This is so specified as to demand, at the time of filing an income tax return, that subsidized project operating entities should report and return the amount to which the subsidy has been applied, out of the amount of deduction for taxable purchase, so that the amount for which the subsidy has been allocated out of the amount of deduction for taxable purchase shall not be detained.

However, because the report mentioned above is based on an income tax return that will be filed after the settlement of the subsidy, occasional delinquency in reporting due to lapse of memory has been found. Also, in order to avoid the complicated office procedures that need to be followed by subsidized project operating entities, the consumption tax shall be handled as follows.

When determining the amount of subsidy applied for in the grant application, the consumption tax must be excluded from the expenses covered by the subsidy before

calculating the subsidy amount and submitting the application.

However, to avoid hindrance to the implementation of the subsidized project, such subsidized project operating entities as those listed below shall be permitted to include the consumption tax in the expenses covered by the subsidy when calculating the amount of subsidy.

- [1] Subsidized project operating entities who are not classified as taxpayers under the Consumption Tax Act
- [2] Subsidized project operating entities who are tax-exempt business entities
- [3] Subsidized project operating entities who are business providers subject to simplified tax
- [4] National or local governments (limited to cases when project is conducted with a special account), or subsidized project operating entities who are corporations listed in the attached Table 3.
- [5] Subsidized project operating entities who are using the general account of a national or local government
- [6] Subsidized project operating entities who are taxable business providers that choose a refund of consumption tax, following confirmation of consumption tax and purchase tax deductions, for instance due to a low amount of taxable sales

## 12. Miscellaneous

- (1) Any expenses incurred (including expenses for order placement) before the effective date of the grant shall not be covered by the subsidy program.
- (2) In the event that the subsidized project operating entity desires to make a purchase or other contract related to material procurement or involving an occurrence of cost, it shall invite open competitive bidding, as a general rule, from the viewpoint of cost effectiveness. If the subsidized project operating entity desires to transfer part of the subsidized project to a third party or conduct the project in partnership with a third party, it shall in advance make a contract on the implementation and report this to PMO.
- (3) Once informed that the decision on grant of the subsidy is made, the subsidized project operating entity shall not change the subsidy budget distribution or the details of the subsidized project nor interrupt or terminate the project without prior approval from PMO.
- (4) The subsidized project operating entity shall promptly report the progress of the subsidized project and so on whenever required to do so by PMO.
- (5) After the subsidized project is completed (or the project termination is approved), the subsidized project operating entity shall submit a project result report to the management office.
- (6) The subsidized project operating entity shall keep accounts on any expenditures for the subsidized project with dedicated account books accompanied by all written evidence in a way that is clearly differentiated from the other accounting to ensure that all incomes and expenditures are meticulously accounted for. The entity shall maintain the account books at least five years after the fiscal year in which the date of completion (or the date of approval for

termination) is included so that they can be accessible whenever requested by METI, fund establishment organization and PMO.

- (7) With respect to the assets acquired or the utility of which has increased through the subsidized project (hereinafter referred to as "the Acquired Assets, etc."), the subsidized project operating entity shall manage them with due care of a prudent manager even after the completion of the subsidized project, and strive to effectively make use of them in accordance with the purpose of the grant of the subsidy. All applicable Acquired Assets, etc. shall be properly controlled using an Acquired Asset Ledger during the asset disposal restriction period, which will be separately set forth.
- (8) If the subsidized project operating entity needs to dispose of (i.e., use, transfer, loan or offer as collateral assets contrary to the purpose of the grant of the subsidy) any Acquired Asset having a unit price equal to or higher than 500 thousand yen (tax excluded) during the asset disposal restriction period separately set forth, they must obtain prior approval. In this case, the entity shall pay part of or the entire subsidy amount as a general rule. (The maximum payment does not exceed the subsidy amount for the appropriate asset to be disposed of).
- (9) After the completion of the subsidized project, the Board of Audit may visit the premises of the subsidized project operating entity for inspection.

### 13. Contact

Toranomon Building 7th Floor,  
1-12 Tranomon 1-chome, Minato-ku,  
Tokyo 105-0001, JAPAN  
Contact: Masaki Kawai, Kazuhito Yoshida  
E-mail: [hair-info@ml.mri.co.jp](mailto:hair-info@ml.mri.co.jp)

\* Contact us through e-mail. We regret that no inquiries will be accepted via telephone.

(Form 1)

No.	
*Leave blank.	

To the Management Office for the Project of Decommissioning, Contaminated Water and Treated Water Management

Application for the subsidies for the “Project of Development of Investigation Technology of Inside of RPV (Development of Investigation Technology of Inside of RPV by using Existing Pipes)”

Applicant	Corporation number (*)	
	Company/Organization Name	
	Representative (Full Name and Title)	
	Address	
Contact	Contact Person (Full Name)	
	Section/Department	
	Title	
	Telephone (Extension, if any)	
	E-mail	

\* If a corporation number in Japan has been given, fill in the 13-digit number.

If you are an individual and foreign company, etc., not having it, leave the field as it is.

(Exhibit)

1. Name of the Subsidized Project

2. Objective and contents of the Subsidized Project

*\*Describe your own understanding of the background of the project, the purpose of the project and its contents briefly.*

3. Scheduled commencement and completion dates of the Subsidized Project

(Scheduled commencement date):

(Scheduled completion date):

4. Entire costs needed for the project JPY

5. Costs subject to subsidy JPY

6. Subsidy amount to be applied for JPY

7. Allocation amount of the costs for the Subsidized Project, costs eligible for the subsidy and subsidy amount to be applied for

The contents are the same as (2) Expenditures, I. Summary table of “2. Plan of the income and expenditure of the Subsidized Project” of the Form 2, “Brief explanation of subsidized project”.

8. Bases for Calculation for the above amount

The contents are the same as (2) Expenditures, II. Distribution of Costs of “2. Plan of the income and expenditure of the Subsidized Project” of the Form 2, “Brief explanation of subsidized project”.

9. If a group is formed to conduct the Project, the names of the group and the member companies

Note 1: The “costs required for the Subsidized Project” refers to the cost required for performance of the relevant project. As a general rule, the amount must be provided after deducting the amount of the national and local consumption taxes.

Note 2: As for the amount of the “Subsidized Costs”, as a general rule, the amount of the “costs required for the Subsidized Project” eligible for the Subsidy must be provided after deducting the amount of the national and local consumption taxes.

Note 3: The “amount of the Subsidy applied for” refers to the amount of the “Subsidized Costs” for which grant of the Subsidy is requested, and the amount limit is the amount of the “Subsidized Costs” multiplied by the Subsidized Ratio (any amount less than 1 JPY shall be rounded down).

Remark: The size of the paper used shall be the Japanese Industrial Standards A4 Format.

(Form 2)

Address

Name (Name of Corporation and Title/Name of Representative Person)

### Outline of Subsidized Project

1. The implementation plan for the Subsidized Project (based on the period in above “4. Project Term”)

(1) Contents and implementation method of the project

*\* (In the case of making a partial proposal in a solicitation where partial proposals are permitted)*

*Provide the implementation items to be proposed.*

*\* Provide the following information by project content item.*

*\* Specific implementation contents and method, based on clarification of issues for each objective of research and development*

*\* Specific implementation content and method for each item of the project content*

*\* Specific proposal to improve outcome of the project*

*\* Project location (Address and name of the location)*

(2) The implementation schedule

*\* Describe the implementation schedule of the project by month for each implementation contents.*

*\* Describe the implementation procedure in detail. If the stages of the research and development are different (such as design, development, tests, etc.) in each item, describe the difference clearly.*

*\* If the persons in charge of the research and development (manufactures and subcontractors) are different in each item, describe the organization they belong to clearly so that we can distinctly understand who will actually implement the item.*

*\* Set the actual targets for achievement of the project purpose as milestones and describe them for each item.*

*\* In setting the milestones, they must be related to the points where delay of the project is foreseen.*

*\* In order to prevent delay, alternative options must be described for items with high risk.*

*\* Describe major output and input information so that correlation with other projects, comprehensive proposals, partial proposals, etc. can be grasped.*

*\* As a plan of the interim report, describe the outputs which will have been able to be achieved at the time of the report and further plan.*

*\* In reporting your progress, show your plan and actual progress in a comprehensible manner. Furthermore, describe the up-to-date situation and further work plan, etc. as a reference.*



(3) The project implementation organization

*\* Provide the implementation organization chart and the number and role of people who are engaged in the project for each item of the project contents (Annex 1, Annex 2)*

*\* After clarifying the responsible person for entire project implementation, the project leader (exclusively employed for the project) and sub-leaders responsible for each project item, provide their profile, area of expertise and experience of engagement in similar projects..*

*\* Describe outsourcing or commissioning, if planned.*

*\* Describe the name, outline, year, ordering party, etc. of similar projects. If the project was done as your own company's project, state it accordingly.*

*\* Clearly state the experiences of each participating party if you form a consortium.*

2. Plan of the income and expenditure of the Subsidized Project (based on the period in above “4. Project Term”)

(1) Income (Unit: JPY)

Item	Amount
Own fund	
*Bond issuance or borrowing	
Other	
Subsidy	
Total	

\*Attach the documents to show the funding plan relating to the relevant bond issuance or borrowing.

(2) Expenditures

I. Summary table

(Unit: JPY)

Classification of costs	Costs required for the Subsidized Project	Subsidized Costs	Classification of the cost burden	
			The amount of cost borne by the Subsidized Project Operating Entity	The amount of the Subsidy applied for
Labor Cost				
Operating cost				
Total				

II. Distribution of Costs (provide the details by project item)

*\*Describe in this sheet or other separate sheets the name of the goods, unit price, man-hour, etc. as basis for the calculation.*

*\*If you form a consortium, clearly describe the breakdown of each company or organization.*

(Unit: JPY)

Type (Example)	The cost required for the Subsidized Project	Subsidized costs	Amount of the Subsidy applied for	Remarks
【Labor Cost】				
• • •				
Sub total				
【Operating Cost 】				
Raw material				
Goods purchase				
Outsourcing				
• • •				
Sub total				
Total				

(Note 1) The “cost required for the Subsidized Project” refers to the cost required to perform the relevant project. As a general rule, provide the amount after deducting the amount of the national and local consumption taxes.

(Note 2) As a general rule, provide the “Subsidized Costs”, which is eligible for the Subsidy after deducting the amount of national and local consumption taxes in the “cost required for the Subsidized Project”.

(Note 3) The “amount of the Subsidy applied for” refers to the amount of the “Subsidized Costs” for which grant of the Subsidy is requested, and the amount limit is the amount of the “Subsidized Costs” multiplied by the Subsidized Ratio (any amount less than 1 JPY shall be rounded down).

Remark: The size of the paper used shall be the Japanese Industrial Standards A4 Format.

### 3. Financial basis and management structure

*\* Describe the outline of your organization; moreover, describe the grounds on which your organization has necessary management basis for smooth implementation of the project as Annex 2.*

*\* Describe the grounds on which your organization is capable of managing funds, etc. (such as organization and storage of evidence documents for expenditures). Furthermore, describe the scheme of the management of the funds (responsible persons and their roles).*

*\* If you form a consortium, all of the above-mentioned items must be described regarding every organization.*

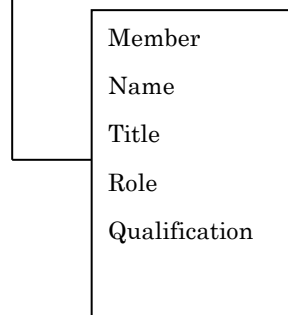
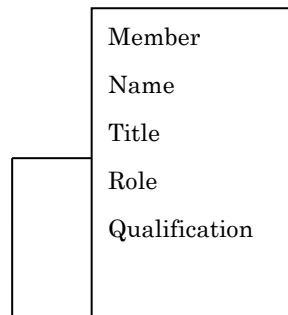
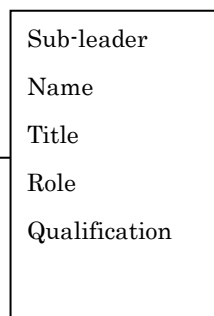
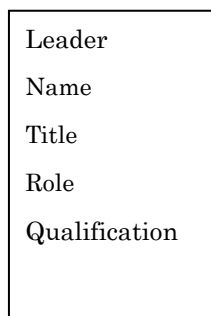
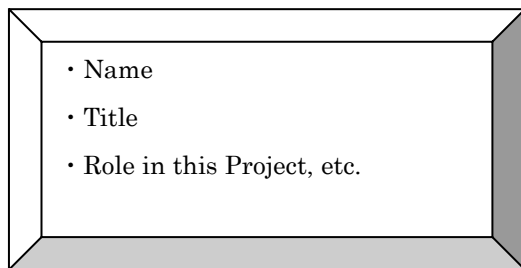
## Implementation Organization Chart

<p>Content of the descriptions</p>	<ul style="list-style-type: none"> <li>• Develop an organization chart to show the framework for implementation of the Project</li> <li>• The names, titles and division of roles of the personnel in charge must be contained in the implementation organization chart</li> <li>• Clarify persons exclusively employed for this project described in this Chart; and describe the career background, expertise, area of specialty at work, qualification associated with the project, and other relevant information must be provided about the key personnel.</li> </ul>
------------------------------------	--

### Operational Implementation Organization

\*A concrete description should be provided by showing an implementation organization chart containing the following information for each project item.

\*Specify the name of the contact person in case of a joint application



(Annex 2) Outline of your organization

Note: If you form a team and apply, you must fill in this sheet for every participant.

\*Fill in the data of the latest accounting year in non-consolidated base.

Company name					
Title/name of the representative person					
Contact information	Tel:		Fax:		
	E-mail:				
Head office's address					
Date of establishment	Date:	Account closing month		Small- or medium-sized company	○ or ×
Capital	JPY in thousands	Number of Employees		(indicate by a circle if the company is a small- or medium-sized company)	
Description of business					
Major shareholders (equity ownership)	○○○ (company limited) (60%)				
	▽□○ (company limited) (30%)				
	□○○ (company limited) (1%)				

(The title and name of the person responsible for above information:

Head of the XX Department, XX XX(Name))

Please provide the information about all officers in the list below:

Full name	Date of Birth			Gender	Company Name	Title
	Year	Month	Day			
(Example) Taro Keizai	19XX	01	01	M	Keizai Sangyo Co., Ltd.	President & Representative Director

(Note 1) Add the columns as appropriate if the provided columns are not sufficient to provide full information.

(Note 2) Use M for male and F for female in one-byte characters to indicate the gender.

(Note 3) For a joint application or a consortium, provide the information about all officers of each and every member (company or otherwise) of the group.

(Remarks) The size of the paper used shall be the Japanese Industrial Standards A4 Format.

(Other documents)

- (1) Outline of the company or organization such as a brochure, etc.
- (2) The financial results, and statement of revenues and expenses (for the past one year)
- (3) The articles of association or the act of endowment
- (4) Other supporting documents (as needed)



(Form 3)

**Certificate of Conformance to Qualification Requirements for  
the Project of Development of Investigation Technology of Inside of RPV  
(Development of Investigation Technology of Inside of RPV by using Existing  
Pipes)**

I confirm that the applicant satisfies the qualification requirements for this subsidized project.

No.	Requirements	Verification, etc.
(1)	Possessing the organization for properly conducting the relevant subsidized project. If the case to subcontract to or jointly implement with a third party a part of the subsidized project, for the creation of project outcome, the appropriate cooperation structure should be established to manage the project.	<State that the applicant satisfies the requirements with reasons in detail ><See Form 2 "1. (3) Project Implementation Organization" when necessary.">
(2)	Having the capacity, knowledge and experience required for conducting the relevant subsidized project.	<State that the applicant satisfies the requirements with reasons in detail ><See Form 2 "1. (3) Project Implementation Organization" when necessary.">
(3)	Having the management foundation required for smoothly conducting the relevant subsidized project and sufficient ability to control the funds and other resources.	<State that the applicant satisfies the requirements with reasons in detail ><See Form 2 "3. Financial basis and management structure when necessary.">
(4)	Being able to implement the project in accordance with all the applicable laws and regulations enacted in Japan, and to follow the appropriate accounting procedures in accordance with "Grant Policy for Subsidy for the Project of Decommissioning, Contaminated Water and Treated Water Management" and "Subsidized Project Administration Manual". <a href="https://en.dccc-program.jp/files/20230224man.pdf">https://en.dccc-program.jp/files/20230224man.pdf</a>	<State that you understand the statement on the left>
(5)	Not foreseen to be subject to Articles 70 and 71 of the Cabinet Order concerning the Budget, Auditing and Accounting.	<State that it does not apply to the applicant>
(6)	Not fulfilling any of the conditions stipulated in the "Guidelines for the suspension of subsidies controlled by the Ministry of Economy, Trade and Industry and the suspension of designation relating to the contracts". (January 29, 2003, No 1) First column, the second items in Attachment	<State that it does not apply to the applicant>
(7)	Research and development companies which may require approval under the Foreign Exchange Act for any exports and imports should have an establishment of internal compliance program(ICP) under a self-control system about the "standards for exporters, etc. to meet" provided for in Article 55-10 (1) of the Foreign Exchange and Foreign Trade Act.	<Describe meeting this condition in the Form 5>
(8)	Admitting that the results obtained through this project can be utilized by TEPCO Holdings, Incorporated, etc. to leverage them for Decommissioning, Contaminated Water and Treated Water Countermeasures if they request to do so under the condition that each party is in agreement. Not preventing the utilization by behaviors such as not admitting use of the technology intentionally, asking for unreasonable compensation, etc. in spite of receiving the request.	<State that it is possible>
(9)	In order to make sure of the above-mentioned item, preventing	<State that you understand the

	<p>the situation that the results from this project are not able to be utilized for measures for decommissioning, contaminated water and treated water management at the Fukushima Daiichi NPS by ceding the above-mentioned condition in (8) to the successor if the applicant hands over the result to a third party and loses their own right to utilize it accordingly. In the case of a conflict which makes the applicant unable to make sure of the items in (8), the concerned parties must solve it by their own responsibility.</p>	<p>statement on the left&gt;</p>
--	---	----------------------------------

<Note for Filling out this Form>

In the verification columns, please write the reasons why you verified that the applicant meets the requirements. When filling it out, write "Attachment" if there are any verification documents attached to this form and if not, write "No attachment."

(Form 4)

Input/Output information on Project of Development of Investigation Technology of Inside of RPV (Development of Investigation Technology of Inside of RPV by using Existing Pipes)

*\*Please refer to the reference document 1 as an example.*

ID	Requested projects	Offered projects	Contents (outline)	Time when the information is necessary	How to use the information	Remarks
				<i>*Influences of delay (if any)</i>		<i>Such as measures for the case when you cannot ensure the accuracy, cannot keep the timeline, etc.</i>

(Form 5)

Response to Security Export Controls on Project of Development of Investigation Technology of Inside of RPV (Development of Investigation Technology of Inside of RPV by using Existing Pipes)

Response to Security Export Controls	
Circle one of the following three options: handled, not handled or not required.	
Handled	Submit relevant documents (export control regulations for security trade)
Not handled	State the date of submission:      Year      Month:
	State future plans
Not required	State reasons

(Form6)

## Personal Data Processing Consent Form

### Purposes

In compliance with the Act on the Protection of Personal Information, Mitsubishi Research Institute, Inc. ("MRI") requests your consent to use your personal data to evaluate of proposal.

### Data Sharing

MRI may share your personal data with cooperating organizations.

### Data Retaining

There are cases in which it is necessary to retain your personal data for the necessary period according to the requirements of Japanese law.

### Data Management

MRI will protect your personal data securely, including taking necessary measures to prevent leakage, loss, falsification, etc.

I have understood the above and give my consent to MRI to use my personal data for the above Purposes, and to carry out the above Data Sharing and Data Retaining.	
Your Full name	
Your Signature	
Date	

If you wish to modify your personal data or withdraw this consent after submission, please notify us by email to [privacy@mri.co.jp](mailto:privacy@mri.co.jp).

Mitsubishi Research Institute, Inc.  
10-3, Nagata cho 2-chome, Chiyoda-ku, Tokyo, Japan  
[privacy@mri.co.jp](mailto:privacy@mri.co.jp)

PMS05\_20180718

(Reference Document 1)

Table 1 Example of Organization of Input/Output information

ID	Requested projects	Offered projects	Contents (outline)	Time when the project is necessary	How to use the information	Remarks
1_1	Advancement of Fundamental Technologies for Retrieval of Fuel Debris and Internal Structures	Development of Technologies for Containing, Transportation and Storage of Fuel Debris / Development of fuel debris criticality control technology	Size and specification of container and criticality detection device	April 2017	Examination of possibility of fuel debris sampling technology	
1_2						
1_3						
1_4	⋮	⋮	⋮	⋮	⋮	⋮

(Reference Document 2)

Table 1 Example of implementation schedule with points of attention

■ Plan

■ Result & Achievement

- Please describe the example of using symbols etc.

- Please describe the established and revised date of project schedule.
- Please describe progress reported date.

MMDD,YYYY Established

MMDD,YYYY Revised

MMDD,YYYY Reported

Project name : OOOOO

Item	Sub Item	Entity in charge	FY20XX						FY20XX						Progress Ratio	Situation & detail of progress (Latest)					
			Oct	Nov	Dec	Jan	Feb	Mar	Apr	May	Jun	Jul	Aug	Sep			Oct	Nov	Dec	Jan	Feb
<b>Validation on XX</b>  <ul style="list-style-type: none"> <li>"Item" means implementation items described in Guidelines for applying. each tasks in Item are described in "Sub item".</li> <li>Please describe items as the same grant applications in this form.</li> <li>Please clarify project operating entity in charge of each sub item if the project is implemented as consortium.</li> </ul>	(1) Survey of on-site situation and relevant technologies	...				Summary														0%	OOOO
	(2) Machinery design	...					Design complete													0%	OOOO
	(3) Machinery production	...						Production complete													
	(4) Establishment of test plan	...				Plan established															
	(5) Test implementation	...						on-site installation	Test complete												
	(6) Evaluation of test result	...																			
	(7) Result summary	...																		0%	
<b>Major milestones</b>					Establishment of test plan completed				Test started		Intrim report		Test completed		Final report						

- Please describe the plan of each implementation item and the milestone of the item specified if necessary.
- Please describe the progress of each item compared with the plan.
- Please describe revised schedule which can recognize the revised points if there have a change of schedule.
- Please describe the progress ratio by numerical figure (%) if available.
- Please add and describe the item of alternative plan if necessary.

- Please describe the progress situation as status such as not yet started/ progressing/ completed and then add supplemental explanation.
- if problems such as delay occurred, please describe explanations such as the reason and content of the problem, revised project schedule of completion plan, the impact of whole schedule and other project progress etc.
- Please add other remarkable items and concerned items if have.

(Reference document 3)

Regarding Subsidized Cost Items

Regarding the cost items defined in “The Decommissioning, Contaminated Water and Treated Water Management Project Implementation Guidelines”, please refer to the following table.

Cost item	Description	Correspondence with “Subsidized Project Administration Manual”
I. Labor cost	Labor cost for working hours of those engaged in the project.	3. Accounting process on labor cost
II. Operating cost		
Raw material cost	Expenses necessary for purchasing raw material or material necessary for implementing the project ※Here, “raw material” denotes what loses its nature and is used for production or manufacturing of entirely new ones; “material” denotes what does not lose its nature and is a constituent element of produced items or manufactured items only through being put to new application.	7. Accounting procedures regarding supplies expenses
Supplies expense	Cost for the purchase of goods necessary for performing the project but not belonging to raw material cost (however, only those verifiable for the use in the project)	7. Accounting procedures regarding supplies expenses
Design, production and processing costs	The thing which the subsidized entity cannot design, produce or process, or the cost necessary for outsourcing what is appropriate and does not belong to Facility and equipment cost to other entity. (contract for work)	11. Accounting procedures regarding expenses for commission fee/outsourcing cost
Facility and equipment cost	Cost necessary for purchasing, production or installation of facility or equipment necessary for undergoing the project ※The actual contents of the “facility and equipment” shall be “buildings and accompanying facilities”, “structures” and “machinery and equipment” stipulated in “Ministerial Order regarding depreciable life of depreciable assets, etc.” (Fifteenth Order of Ministry of Finance, 1965).	6. Accounting procedures regarding equipment expenses and rental and hire fees 11. Accounting procedures regarding expenses for commission fee/outsourcing cost
Procurement cost	Cost for the thing which is necessary for undertaking the project and does not belong to facility and equipment cost (at the same time, can be usable more than one year)	6. Accounting procedures regarding equipment expenses and rental and hire fees
Survey cost	The cost for outsourcing to another entity what the subsidized entity cannot survey or analyze by itself or is not suitable to be conducted by the subsidized entity itself (contract for work)	11. Accounting procedures regarding expenses for commission fee/outsourcing cost



Outsourcing cost	Cost for outsourcing to other business operator what subsidized company cannot implement on its own or not appropriate to do so and does not belong to design, production and processing costs, facility and equipment cost or survey cost (contract for work)	11. Accounting procedures regarding expenses for commission fee/outsourcing cost
Travel expenses	Cost for domestic business travels and overseas business travels necessary for performing the project.	4. Accounting process for travel expenses
Gratuities	Gratuities necessary for performing the project (gratuities for external experts who attended meetings, seminars, symposiums, etc., gratuities for giving seminars, writing of drafts, cooperation with research, etc.)	5. Accounting process for meeting expense and rewards
Rent and hire	Cost for lease and rental of machinery, equipment and the like necessary for performing the project	6. Accounting procedures regarding equipment expenses and rental and hire fees
Other expenses necessary for undertaking the project	Cost for other expenses necessary for undertaking the project which does not belong to any other items Examples Commission fee: the cost for outsourcing to other entities of the cost for assistant personnel or of the cost for temporary staffing, which cannot be done or what is not appropriate to be done by the subsidized entity	9. Accounting procedures regarding assistant labor costs 10. Accounting procedures regarding other miscellaneous expenses 11. Accounting procedures regarding expenses for commission fee/outsourcing cost, etc.